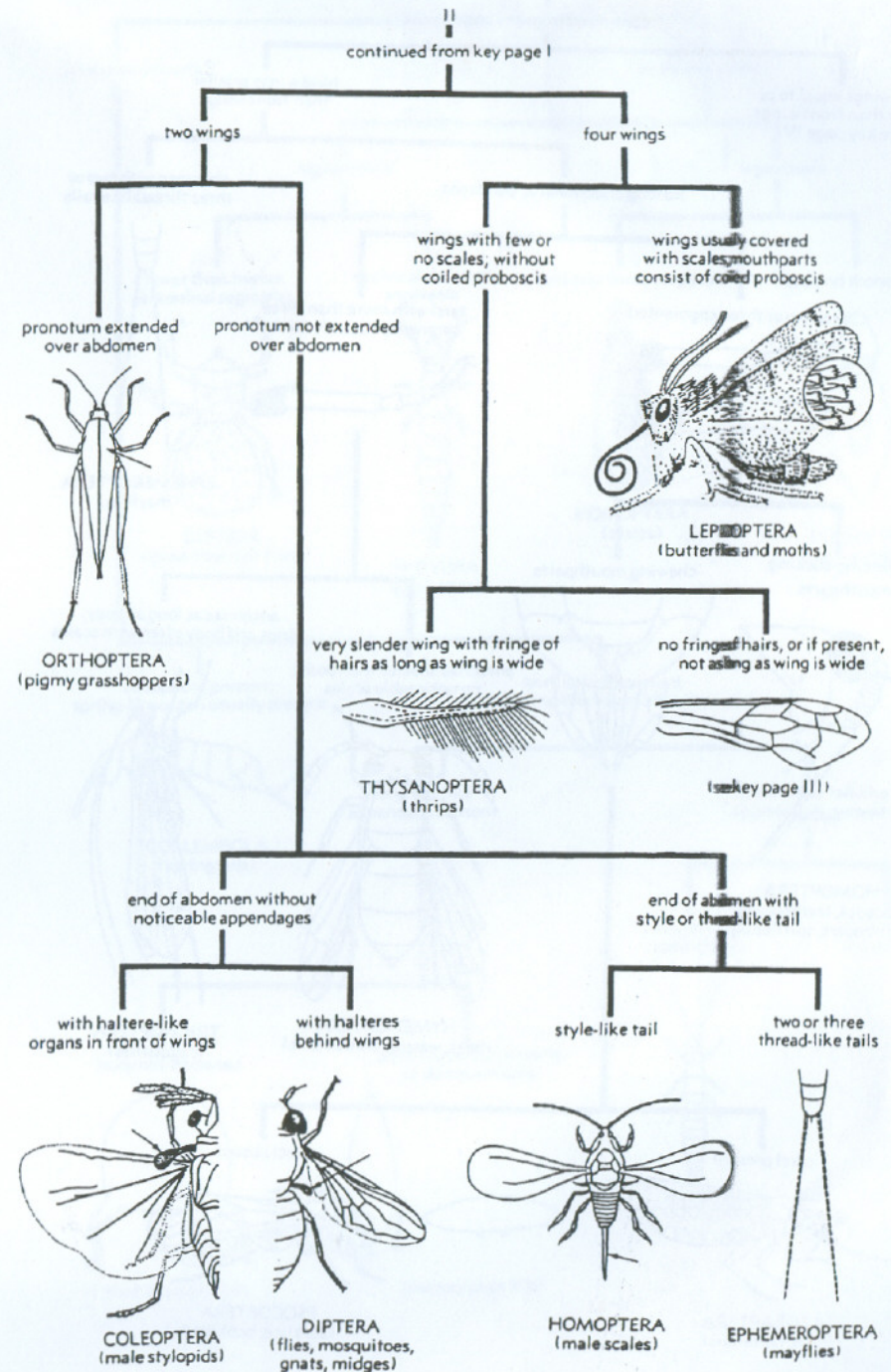
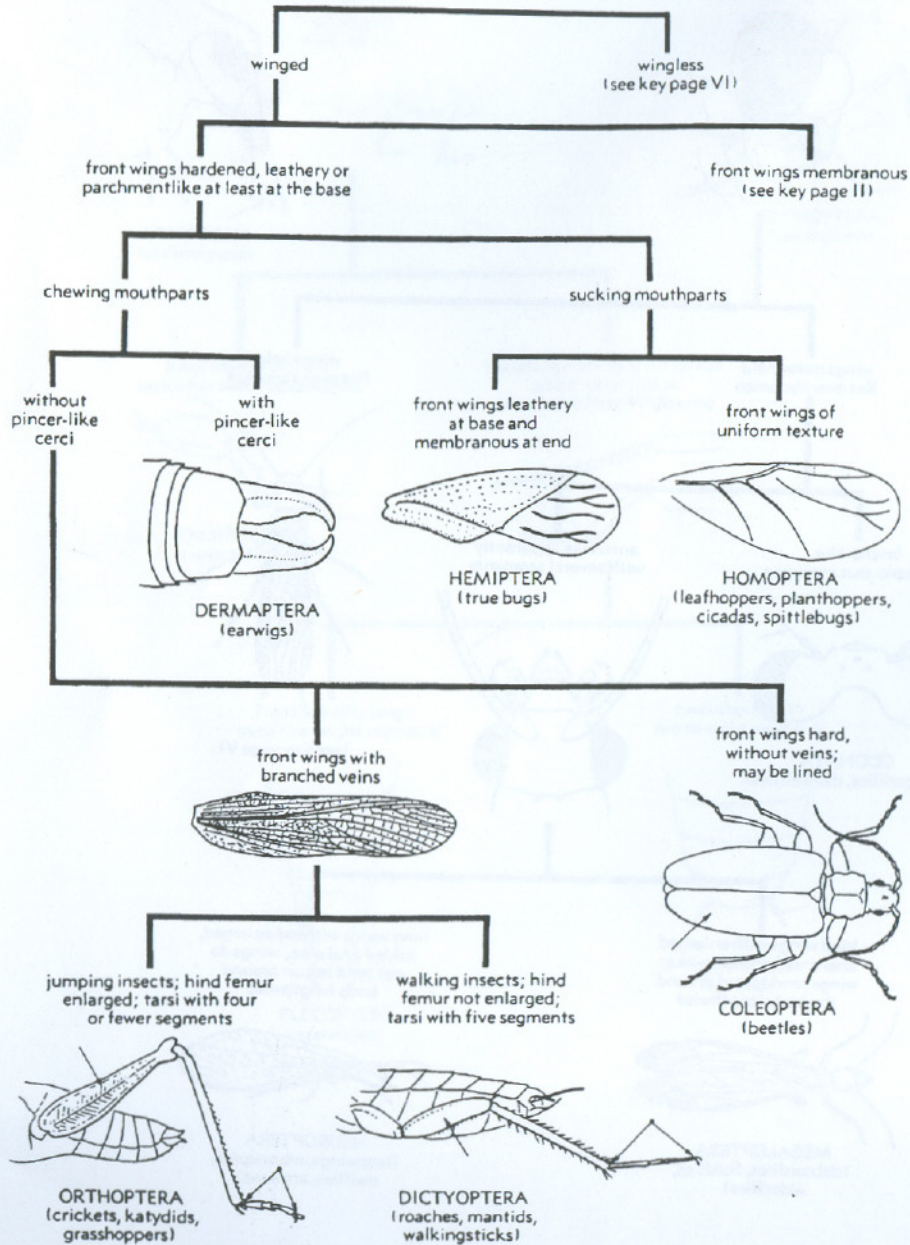
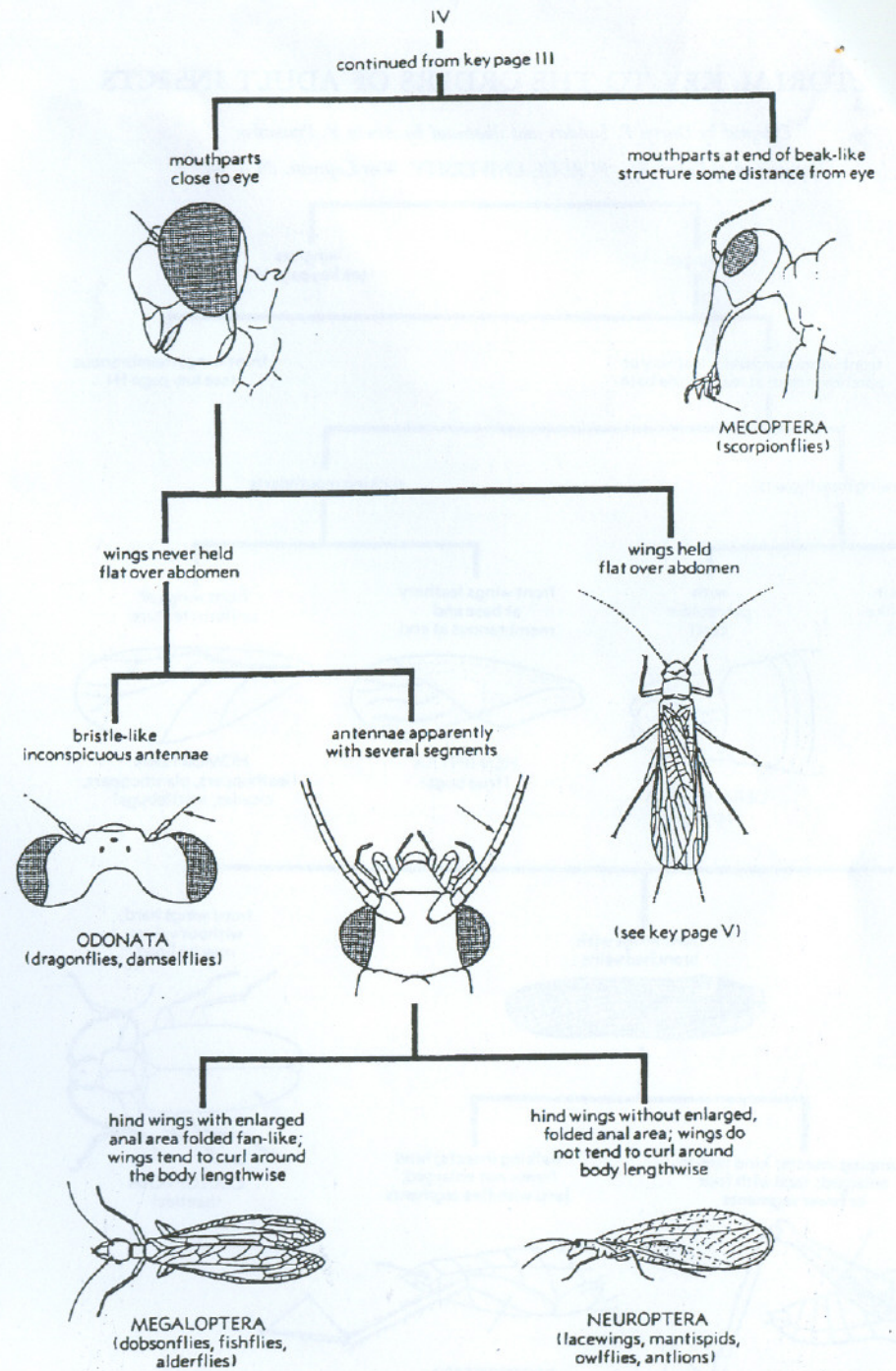
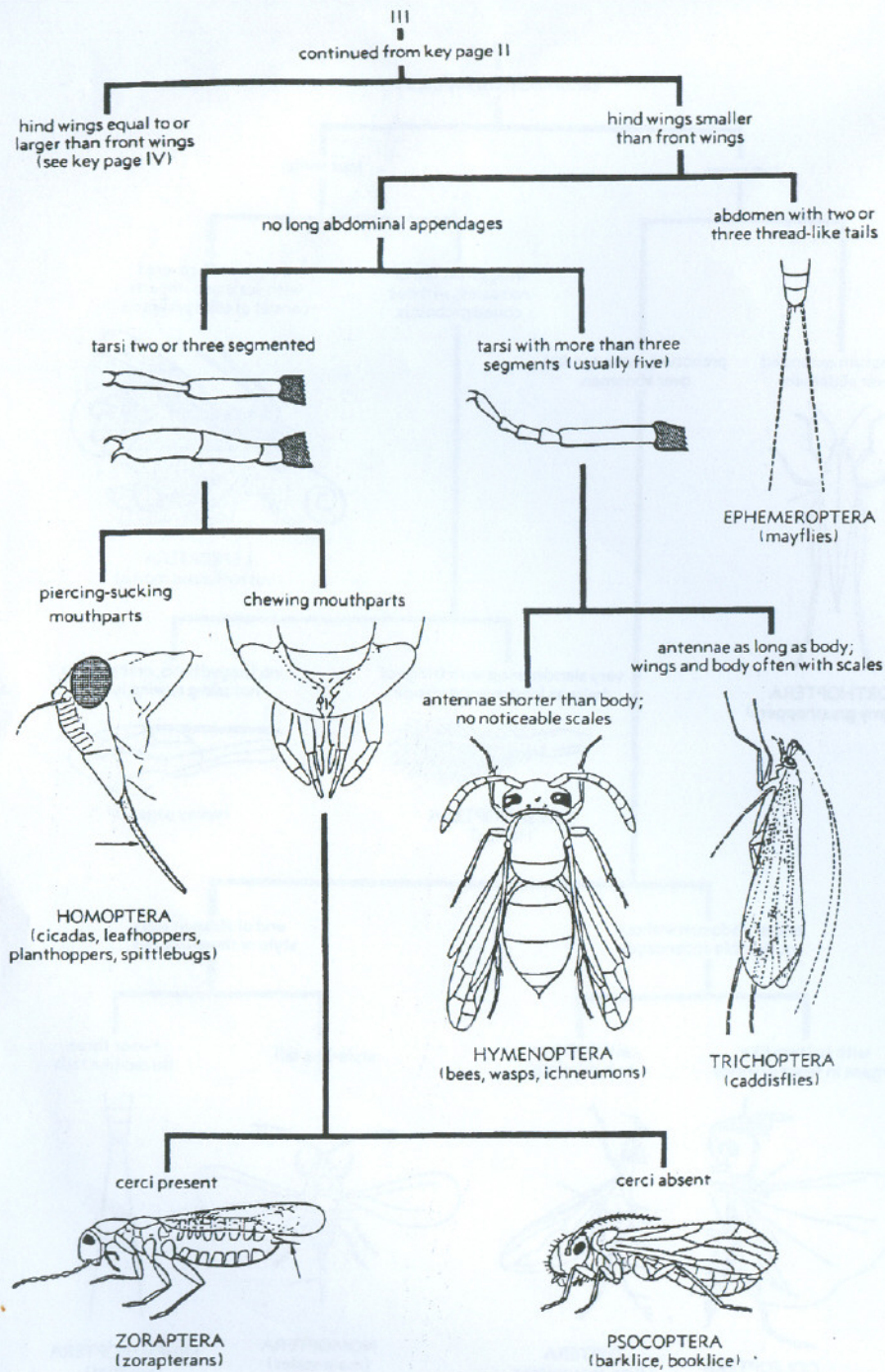


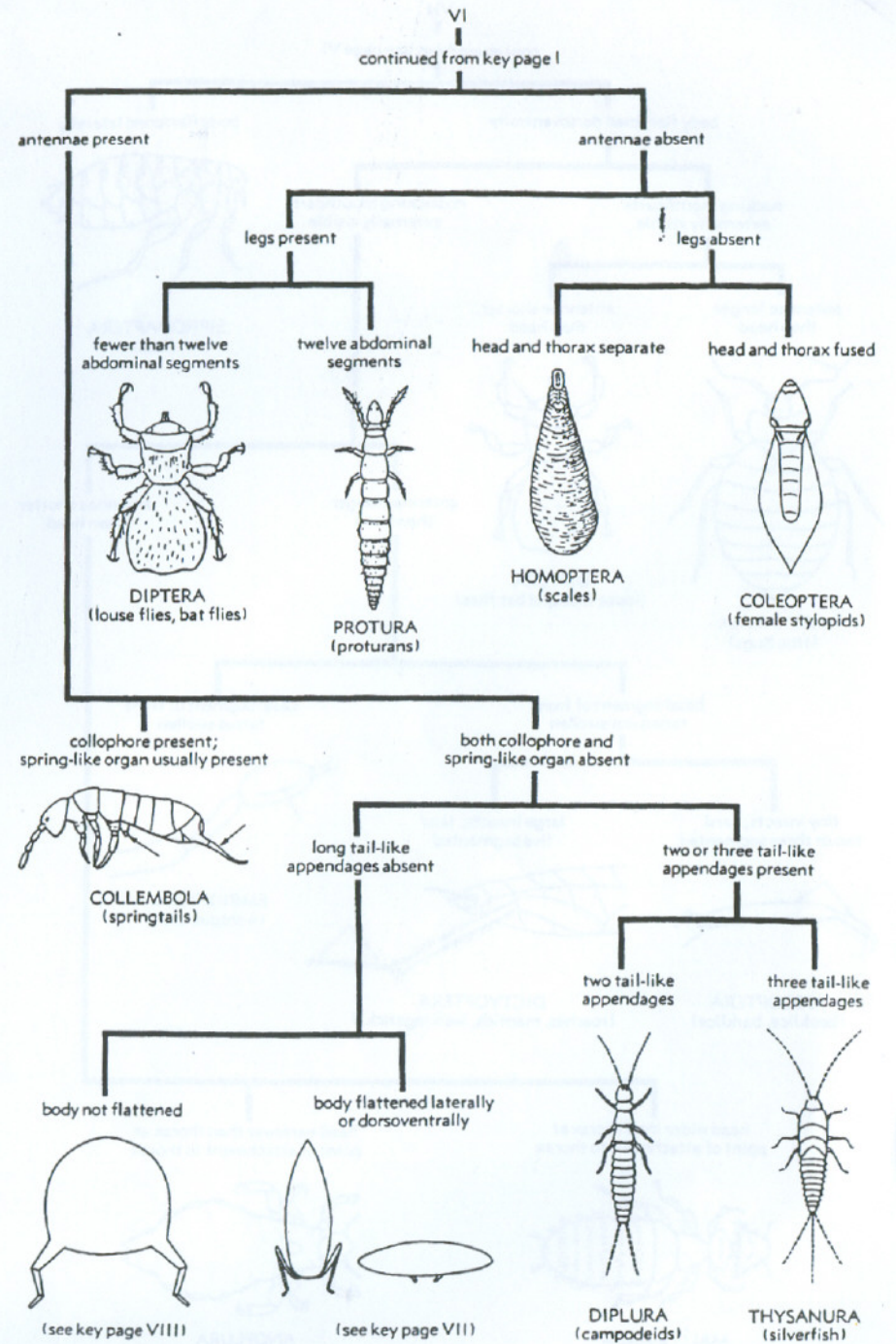
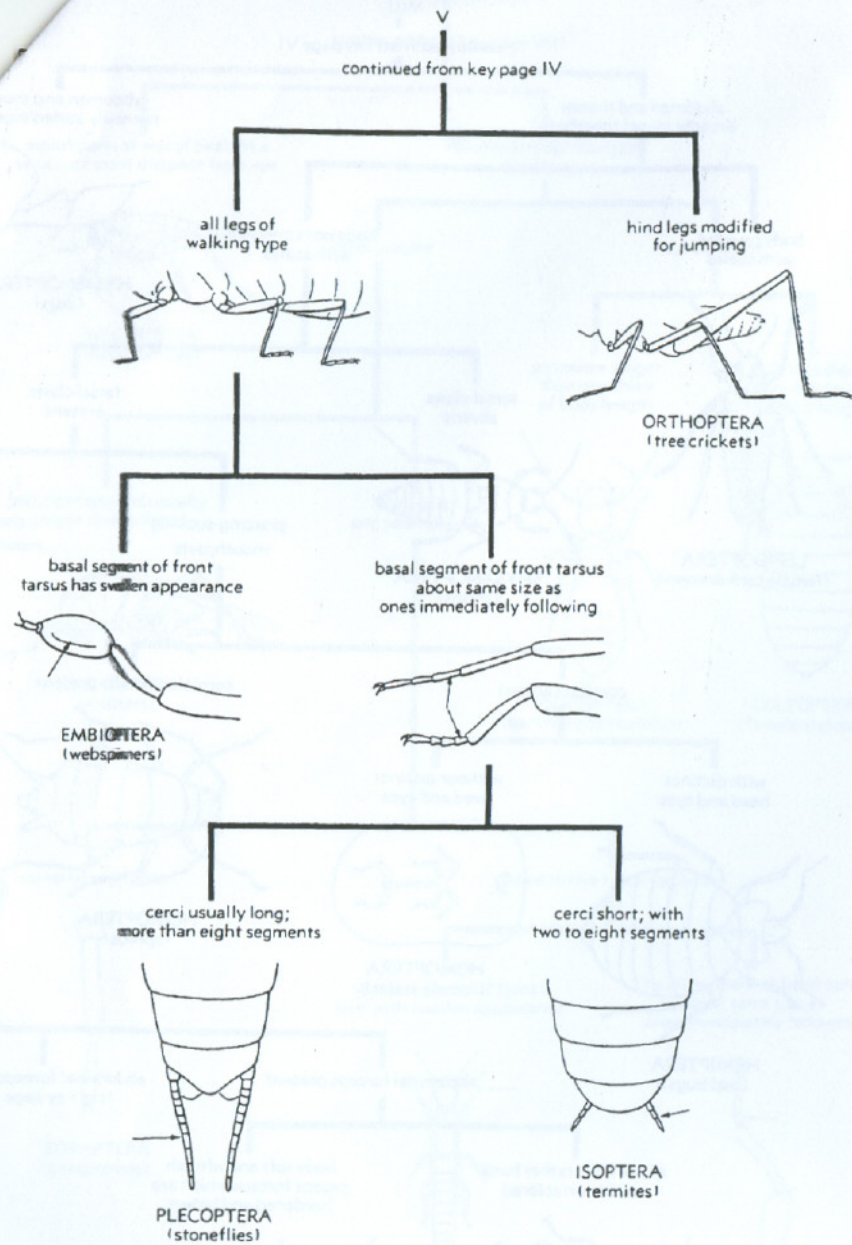
Steve Prochel, SASI  
A5'00

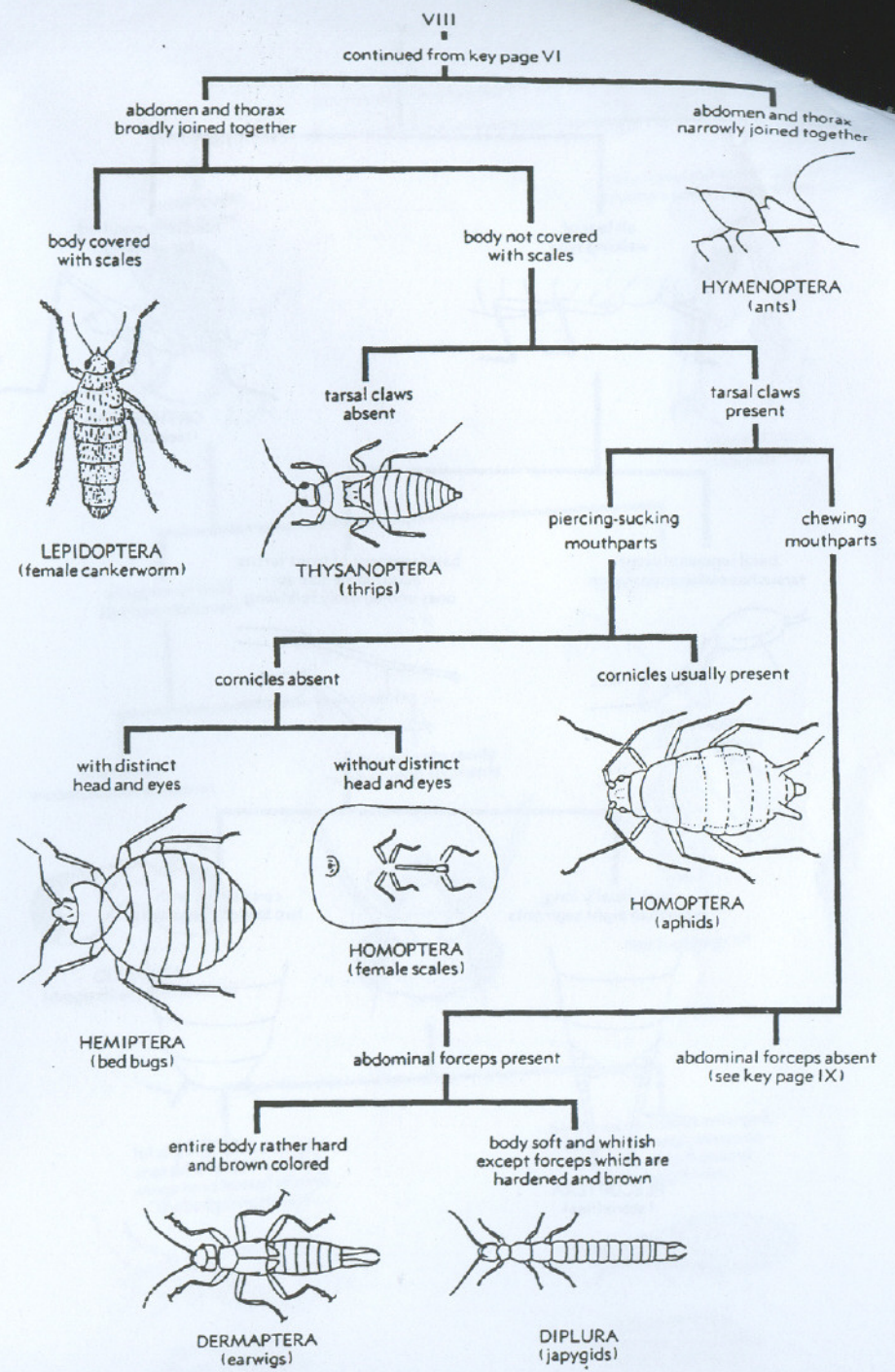
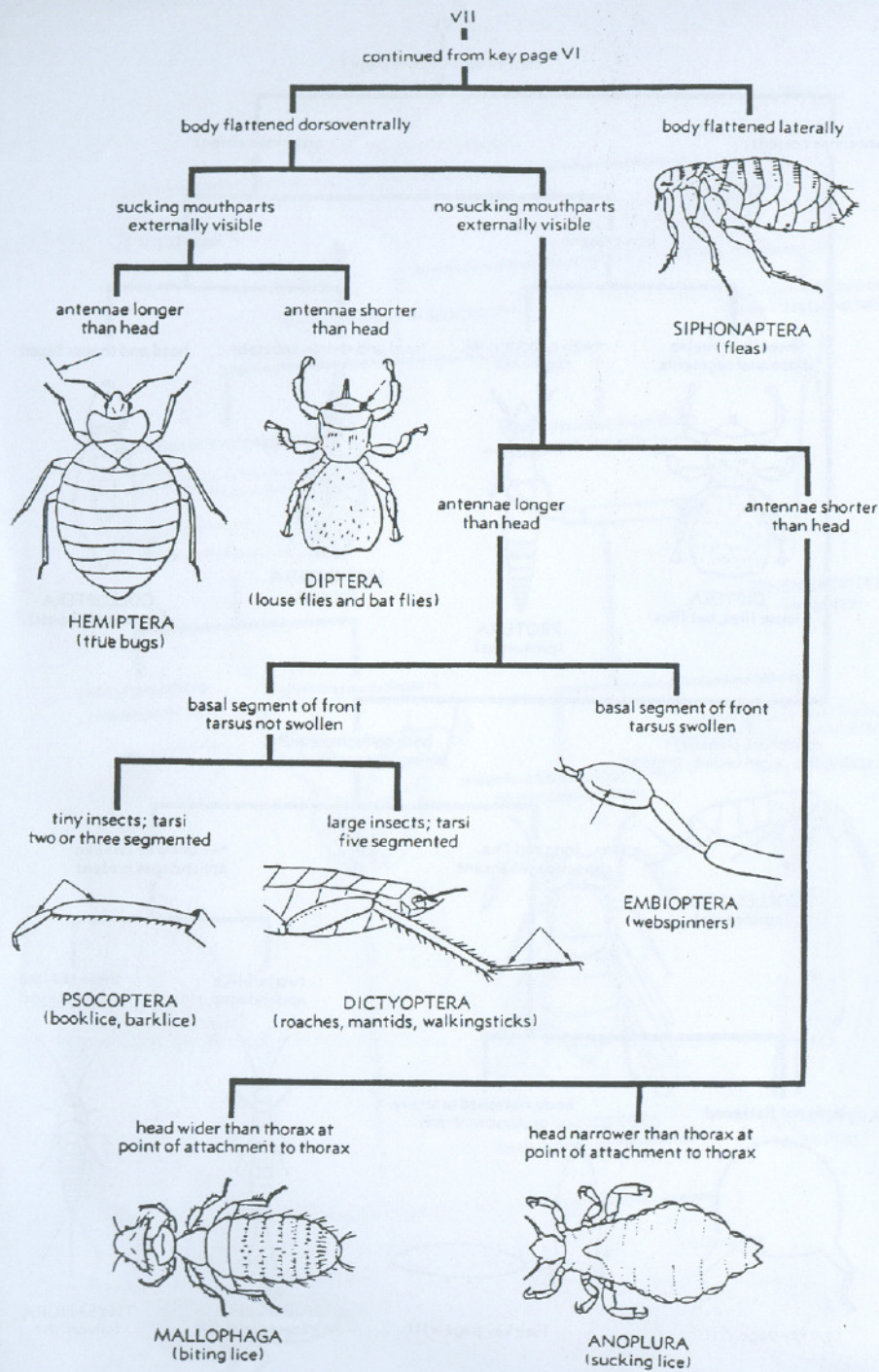
# A PICTORIAL KEY TO THE ORDERS OF ADULT INSECTS

Designed by Darryl P. Sanders and illustrated by Arwin V. Provoruba  
Department of Entomology, PURDUE UNIVERSITY, West Lafayette, IN 47907









IX  
continued from key page VIII

mouthparts at end of beak-like structure some distance from eye



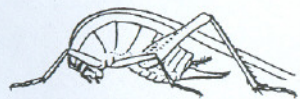
**MECOPTERA**  
(scorpionflies)

mouthparts not elongate, close to eyes

cerci present

cerci absent

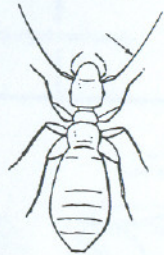
body leathery and usually grey or dark colored



**ORTHOPTERA**  
(crickets)

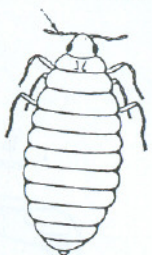
body soft and pale colored

antennae longer than one-third of body length



**PSOCOPTERA**  
(barklice and booklice)

antennae shorter than one-fourth of body length



**COLEOPTERA**  
(female stylopids)

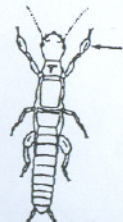
two tarsal segments



**ZORAPTERA**  
(zorapterans)

three to five tarsal segments

basal segment of front tarsi with swollen appearance



**EMBIOPTERA**  
(webspinners)

basal segment of front tarsi about same size as ones immediately following



**ISOPTERA**  
(termites)