



To Ward

To Nederland

RESEARCH AREA
NO FIRES, NO CAMPING
DOG LEASH REQUIRED, NO PACK ANIMALS
STAY ON TRAILS

**CITY OF BOULDER
WATERSHED
NO ACCESS**

In 1929 the U.S. Congress deeded most of the land in the Silver Lake Watershed to the City of Boulder specifically for water supply purposes. The watershed contains 13 reservoirs and natural lakes that are fed by snowmelt and the melting of Arapahoe Glacier. This high-quality water supply was sufficient to meet all of Boulder's water needs until the 1950s. Today about 40% of the city's water supply is derived from the Boulder watershed basin. In the 1930s, the University of Colorado began sensitive ecological and climate research in the Green Lakes Valley within the watershed. In order to protect water quality and to preserve the fragile alpine environment, the Boulder Watershed is closed to public access.

- Public Parking
- Trailhead Public Restrooms
- Structure (mileage shown is in miles, one-way from MRS)
- Emergency First Aid Supplies (Life or Limb only)
- Emergency Phone (Life or Limb only)
- No motorized vehicles

YOU ARE HERE

**NEED A MAP?
TAKE A PHOTO!**

**D1
Climate Station
(CU Private)**
5.9

**Tundra Lab
(CU Private)**
4.4
T-van
(CU Private)
4.0

**Kiwi Van
(CU Private)**
3.3

**GATE 3
Cable Gate
Locked Gate**
3.0

**C1
Climate Station
(CU Private)**
1.0

**CU Mountain
Research
Station**
AED
Day Use
Visitor Parking

**GATE 2
Locked Gate
Research Access
ONLY**

**GATE 1
Public Access**

Sourdough TH

CR 116

Rainbow Lakes TH
and Campground
this way

Sourdough Trail

5.7 miles to
Brainard Gateway TH

3 miles to
Lone Lake TH

Niwot Ridge Trail

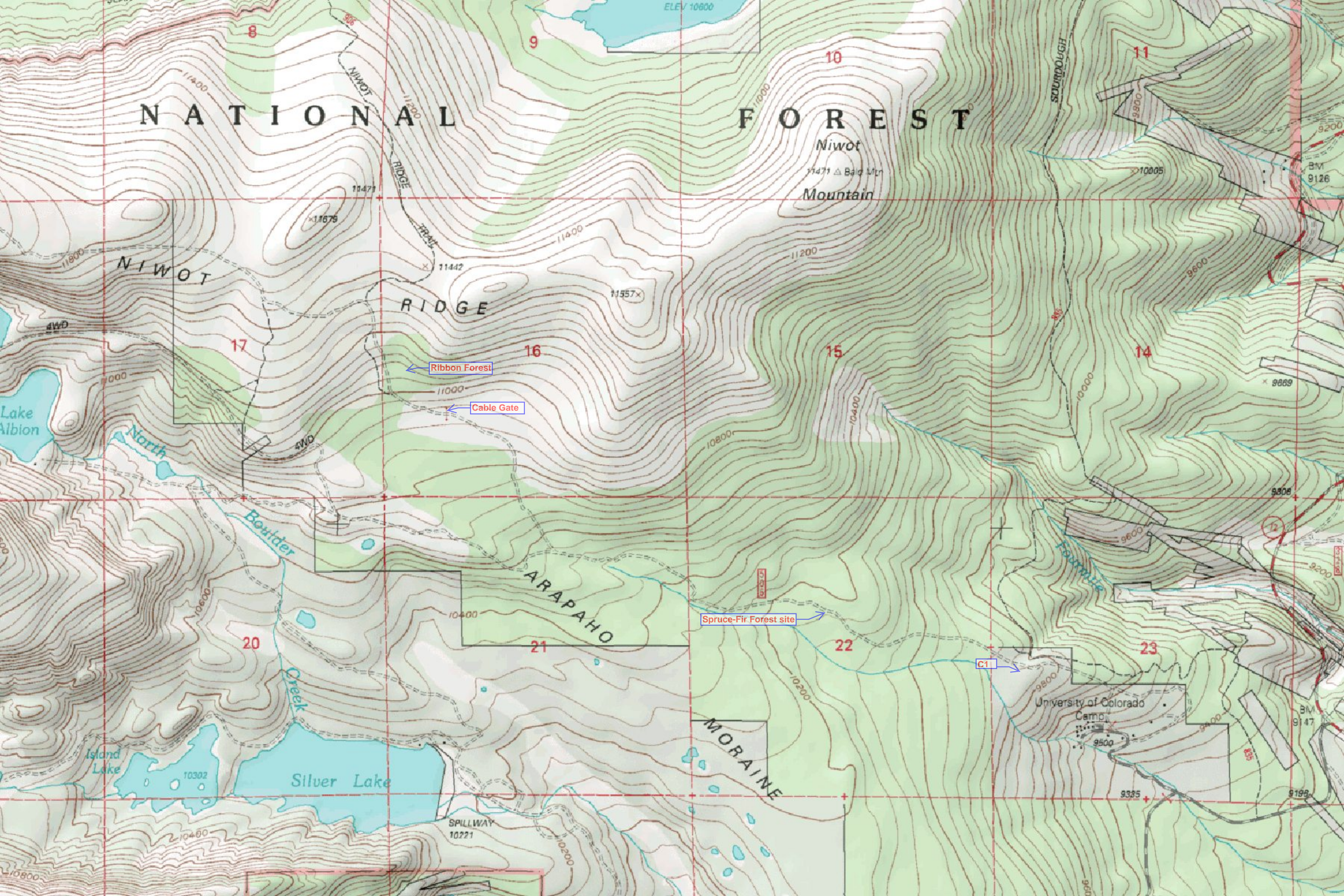


Niwot Ridge Road (FS506)

"Cabin
Clearing"

"Hill's Mill"

Peak to Peak Hwy 72



NATIONAL FOREST

Niwot
11471 Δ Bald Mtn
Mountain

NIWOT

RIDGE

16

Ribbon Forest

Cable Gate

15

Spruce-Fir Forest site

22

14

17

20

21

23

Lake Albion

North Boulder Creek

Island Lake

Silver Lake

SPILLWAY
10221

ARAPAHO MORaine

University of Colorado
Camp

BM
9126

x 9869

9308

9200

BM
9147

9198

9000