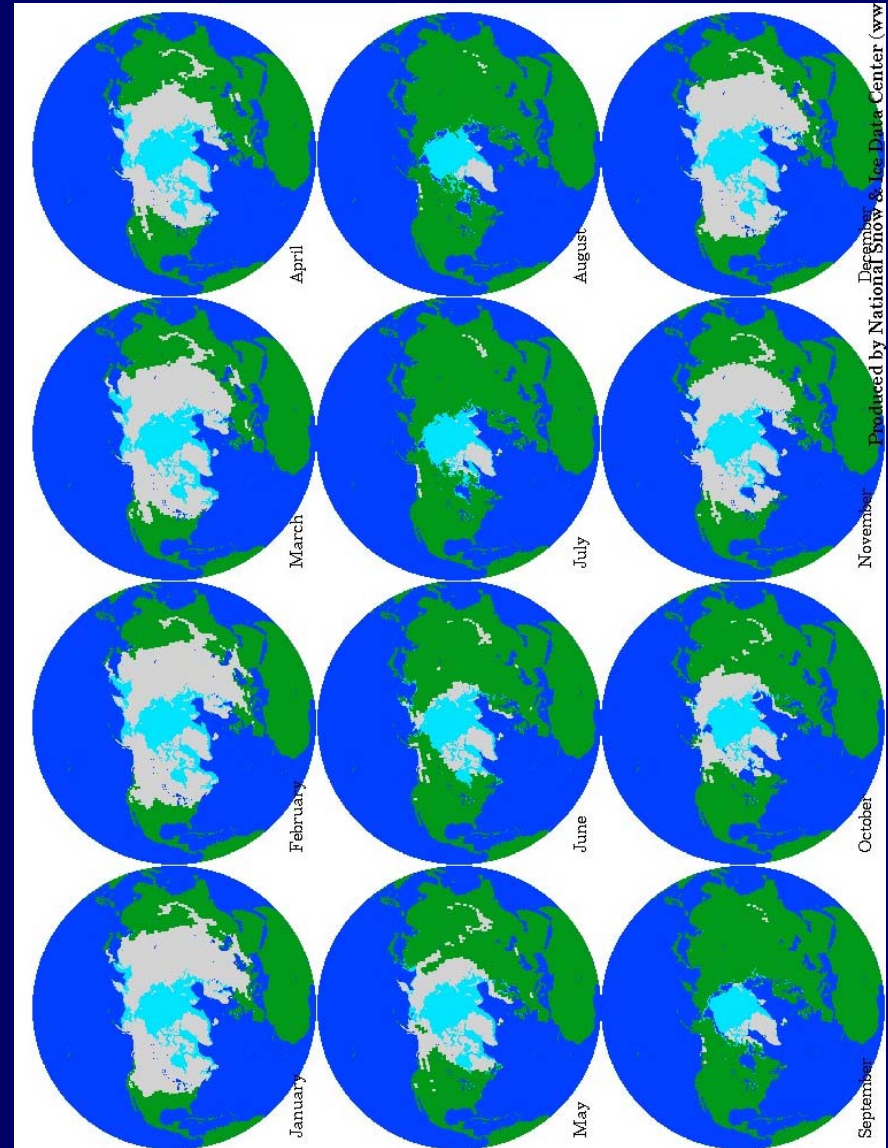
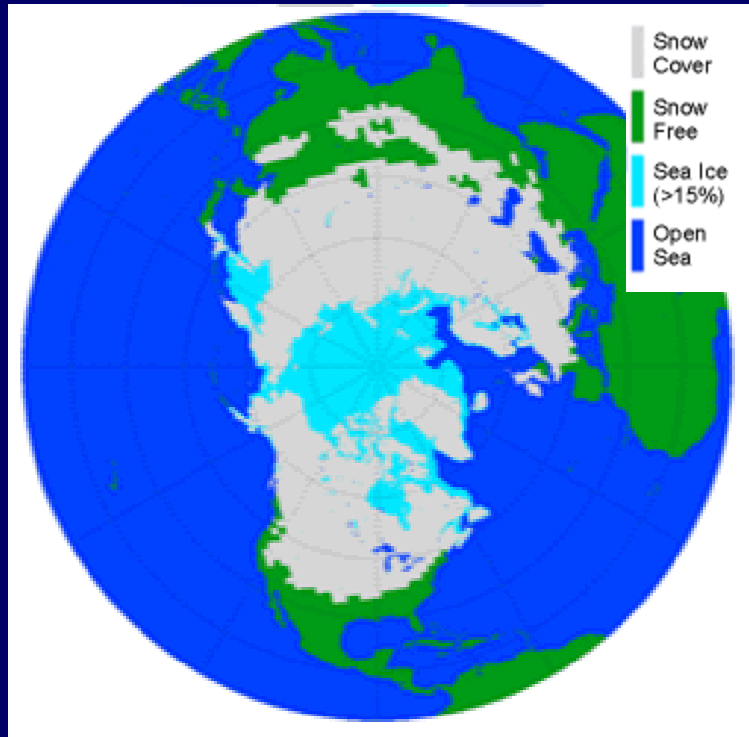
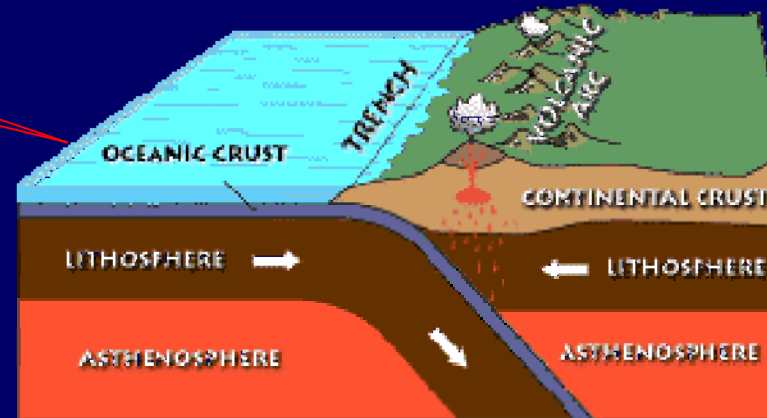
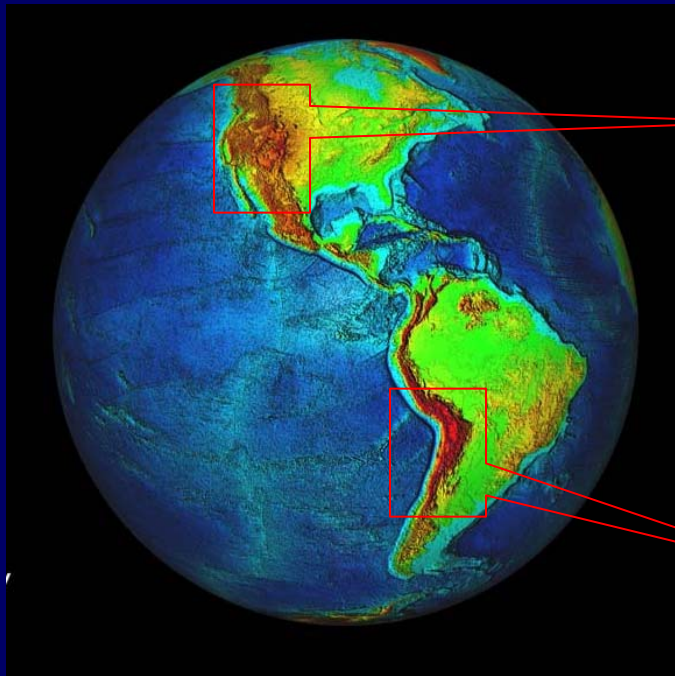


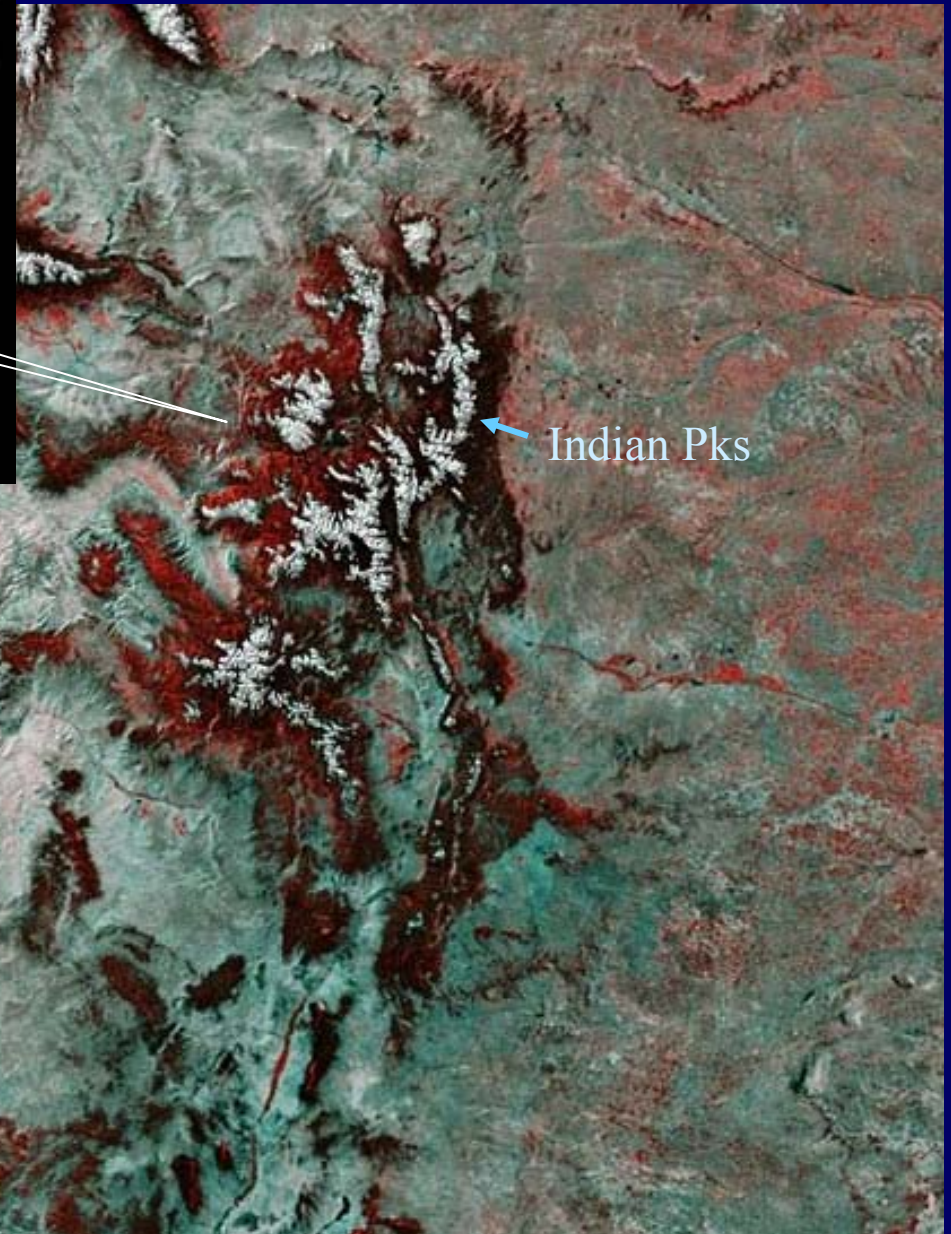
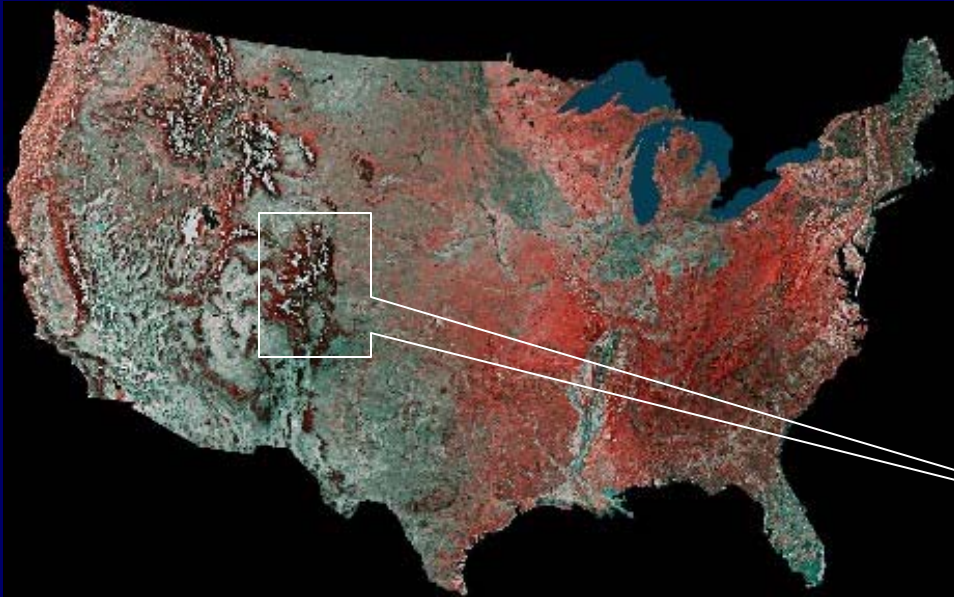
Seasonal cycle of snow & ice cover Northern Hemisphere



Longitudinal extent of the Rocky Mountain region (vs. the Andes) in relation to hypothesized plate subduction geometry



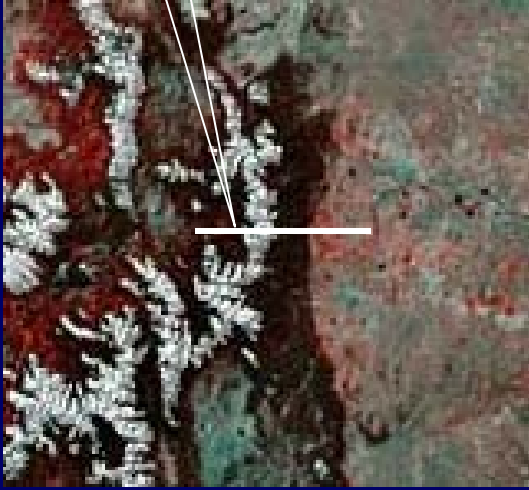
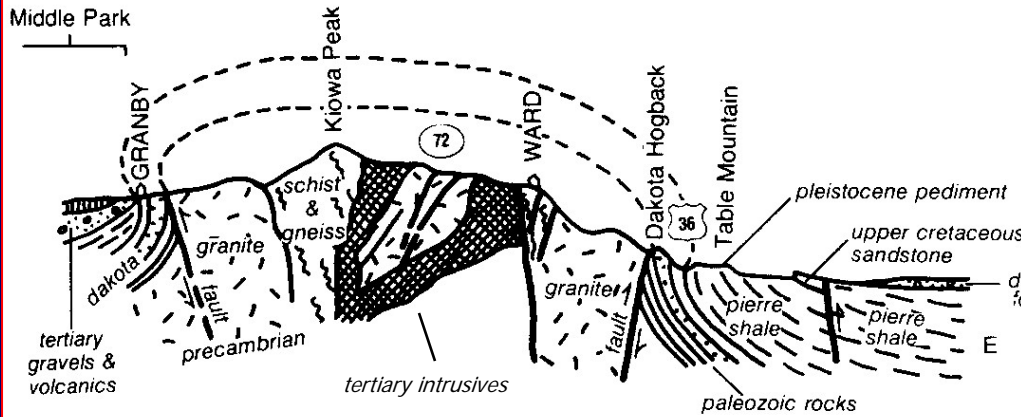
Complex physiography of Rocky Mtn provinces



Provinces –

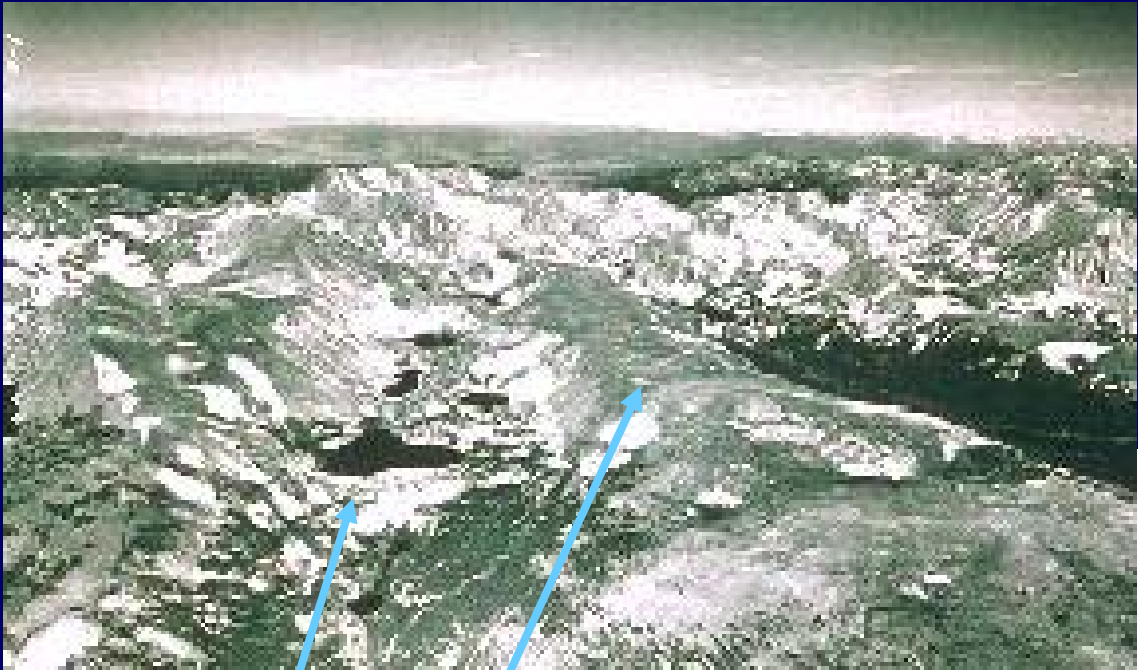
- Canadian Rockies
- Northern US Rockies
- Central Rockies
- Southern Rockies

Colorado Front Range Geology Indian Peaks & vicinity

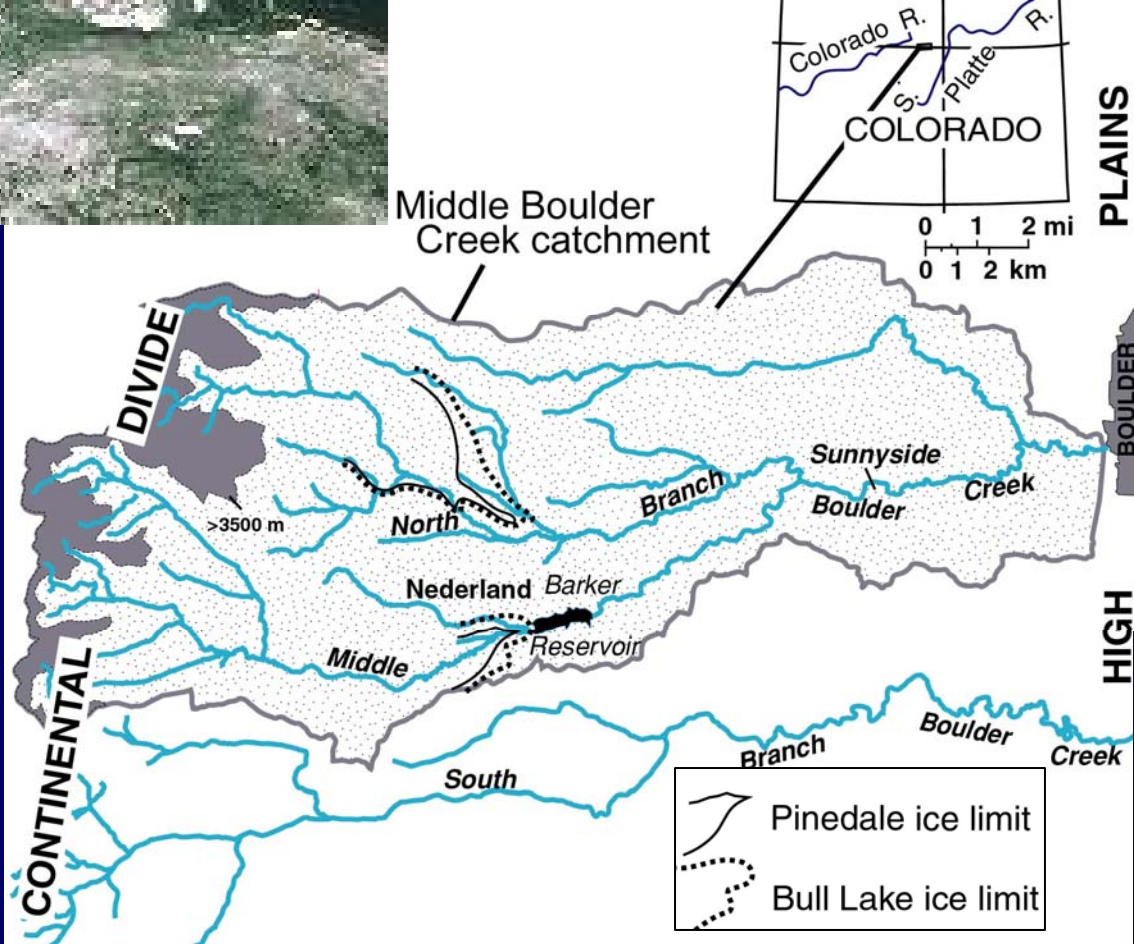


Figures from *Roadside Geology of Colorado* by Halka Chronic, 1980
(Mountain Press Publ, Missoula)

Indian Peaks Glaciation



Green Lakes
Niwot Ridge



Map from T. Schildgen, 2000
<http://www.uvm.edu/cosmolab/projects/tayweb/location.html>

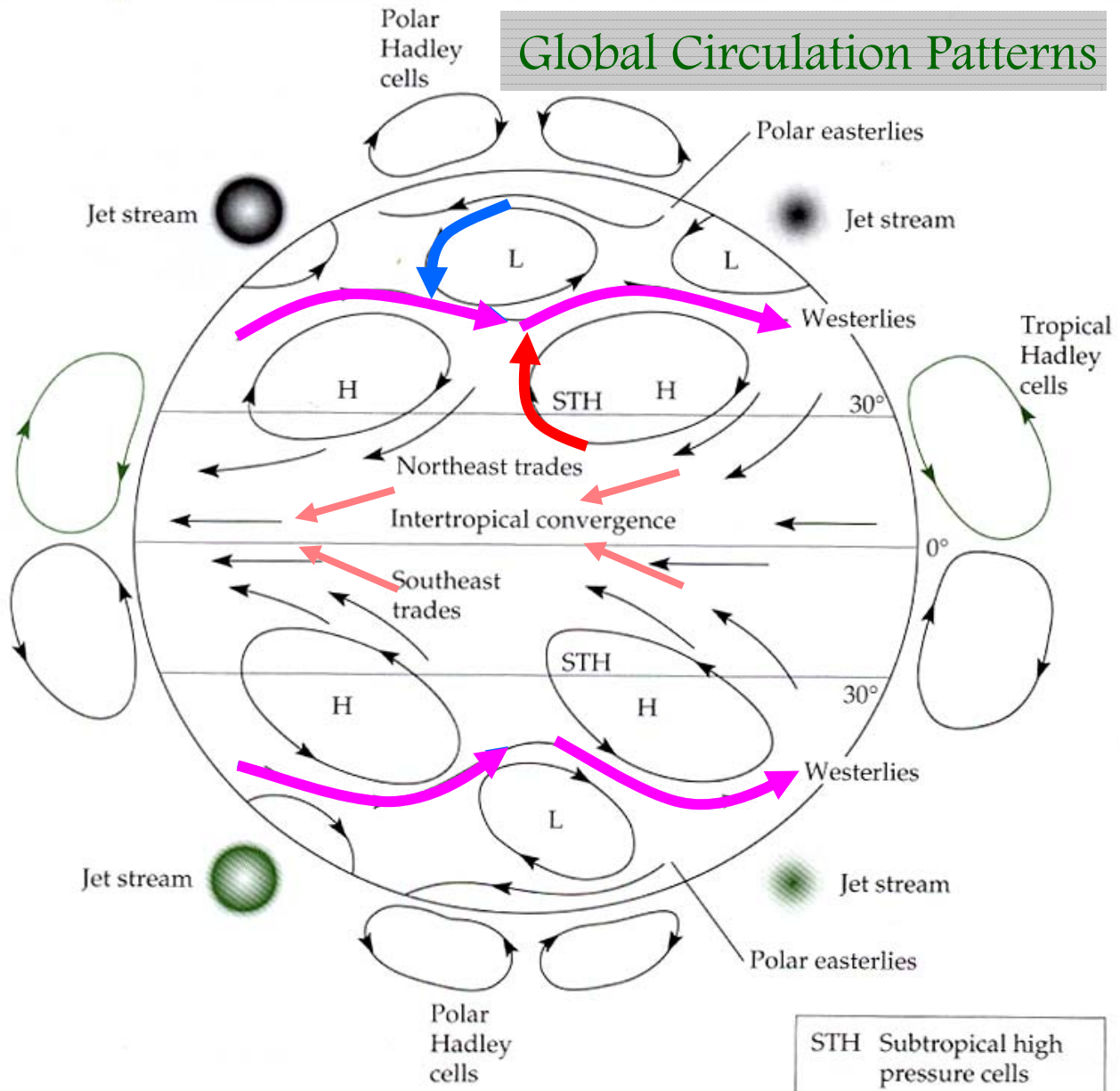
Social setting of the Southern Rockies



Salt Lake City & vicinity

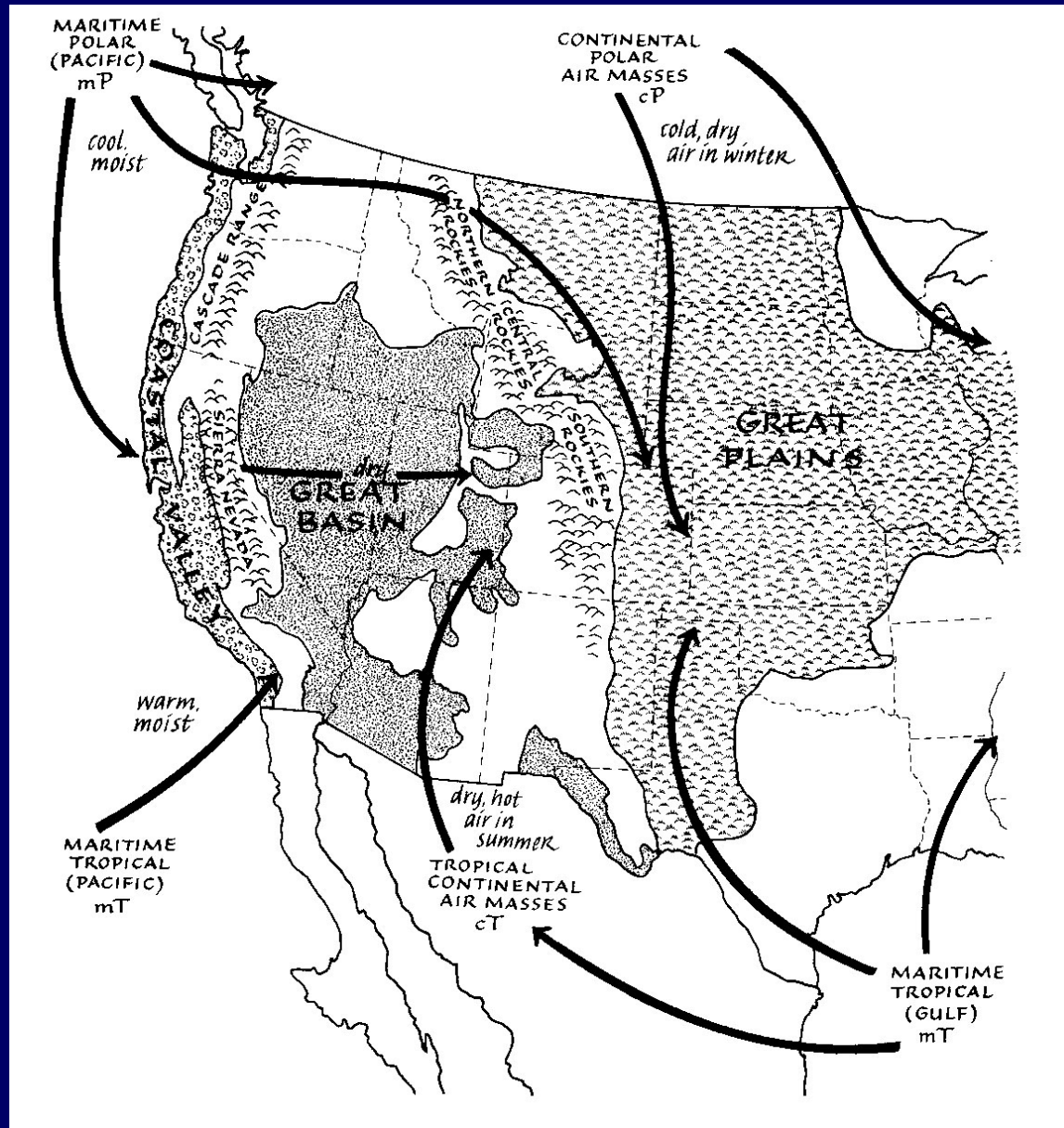
Colorado Front Range urban centers

Global Circulation Patterns



| | |
|-----|---------------------------------|
| STH | Subtropical high pressure cells |
| L | Low pressure cells |
| H | High pressure cells |

Air mass sources and flow patterns influencing the climate of the US Rocky Mtns



from A. Benedict and B. Bash. 1991. *The Southern Rockies* (Sierra Club Books)