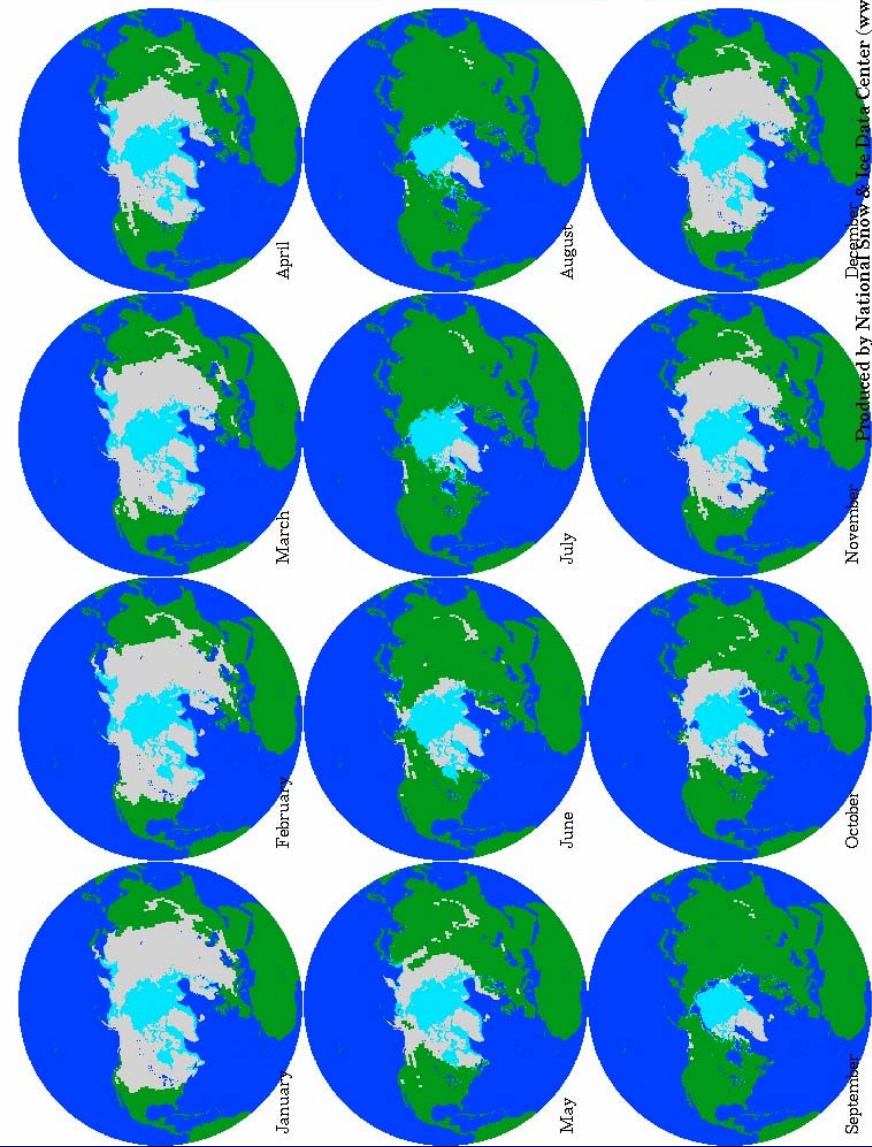
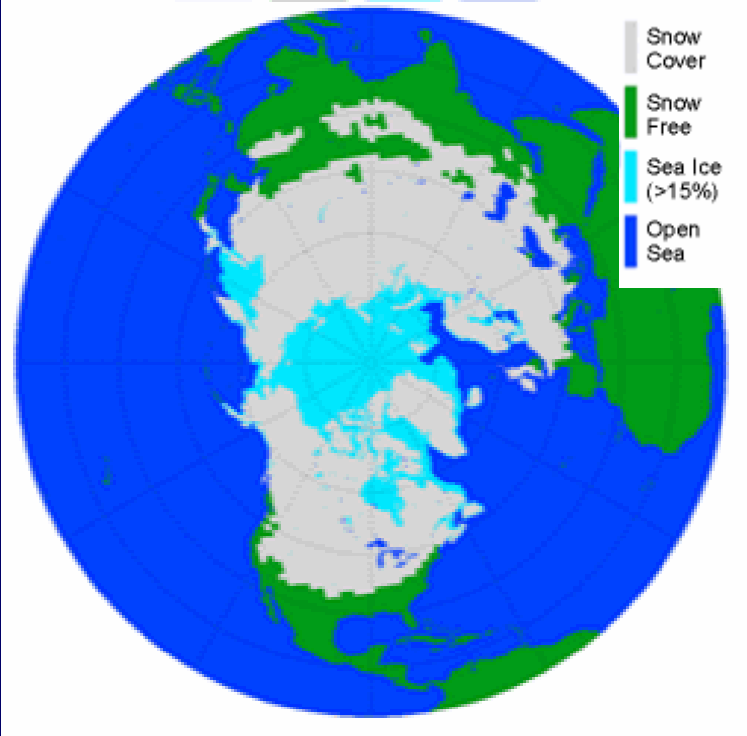
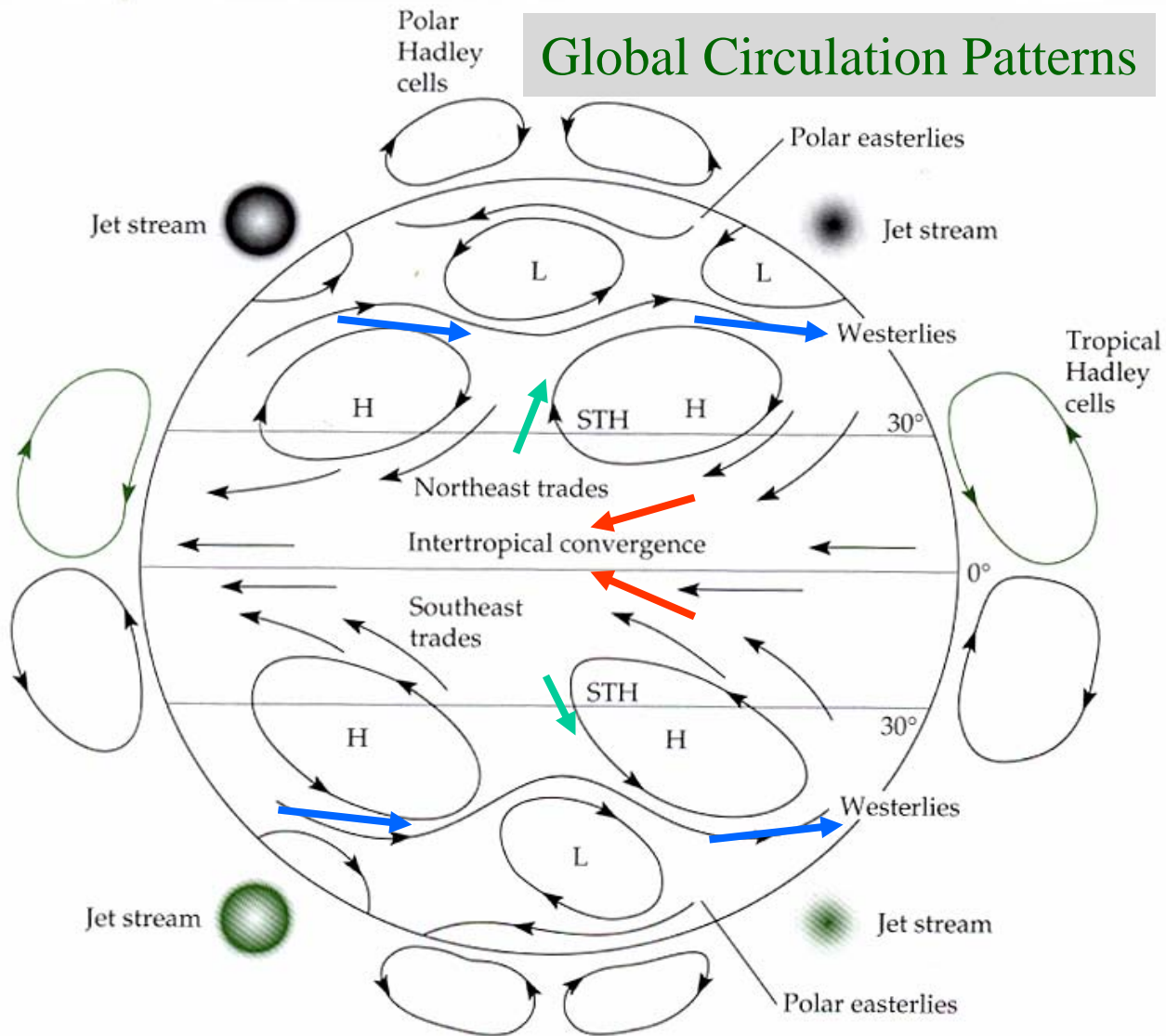


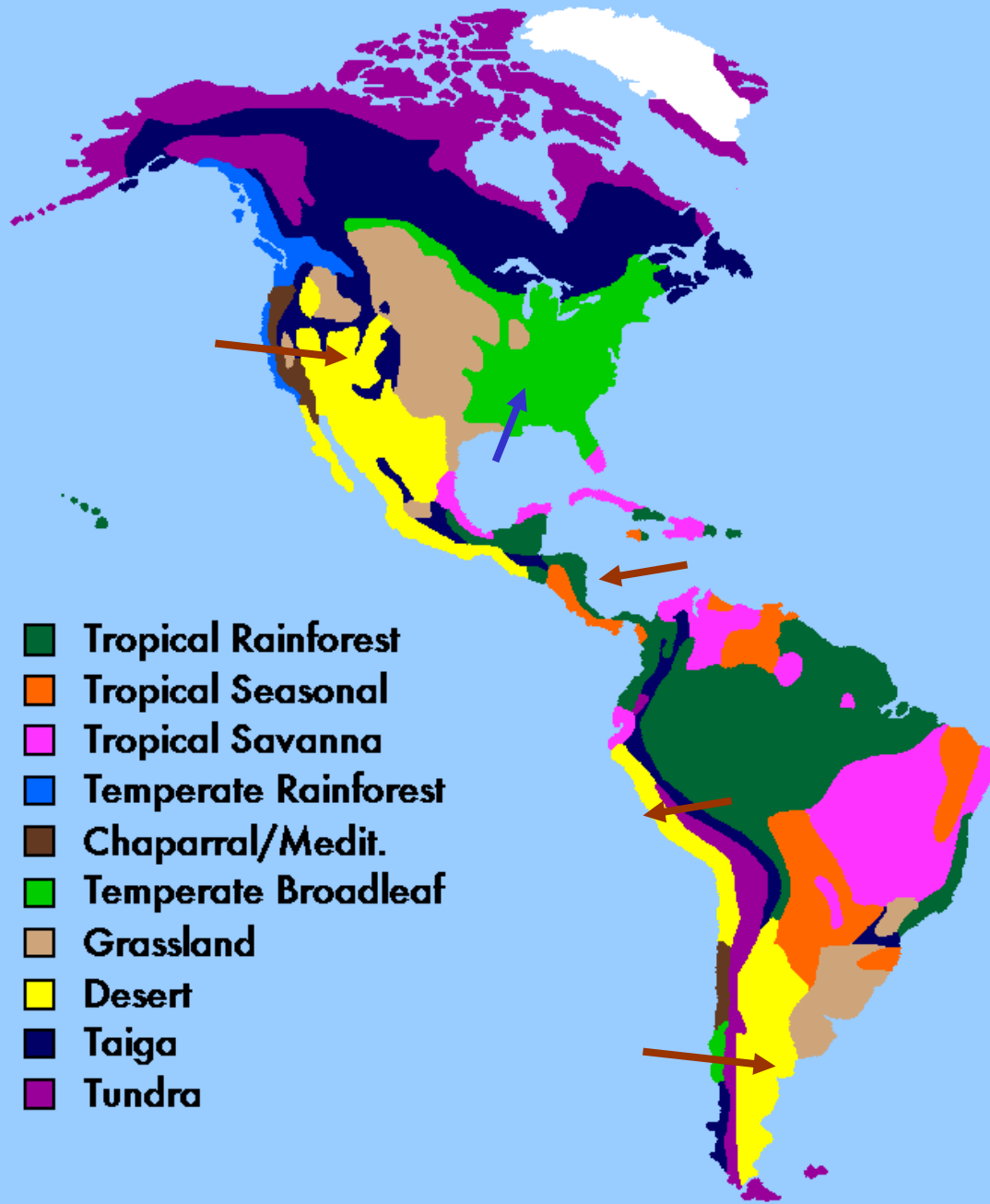
Seasonal cycle of snow & ice cover Northern Hemisphere



Global Circulation Patterns

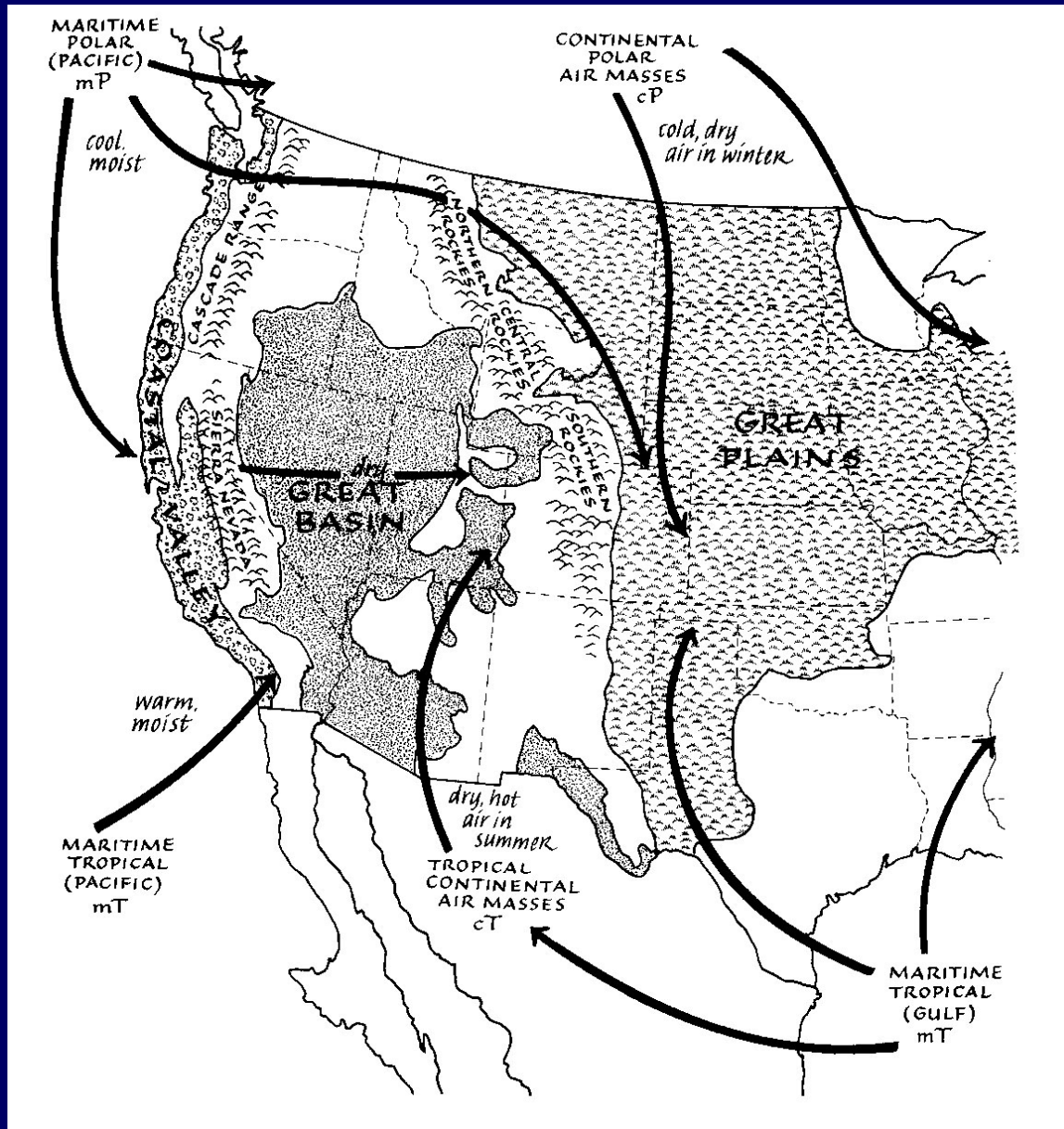


STH	Subtropical high pressure cells
L	Low pressure cells
H	High pressure cells



- Tropical Rainforest
- Tropical Seasonal
- Tropical Savanna
- Temperate Rainforest
- Chaparral/Medit.
- Temperate Broadleaf
- Grassland
- Desert
- Taiga
- Tundra

Air mass sources and flow patterns influencing the climate of the US Rocky Mtns



from A. Benedict and B. Bash. 1991. *The Southern Rockies* (Sierra Club Books)