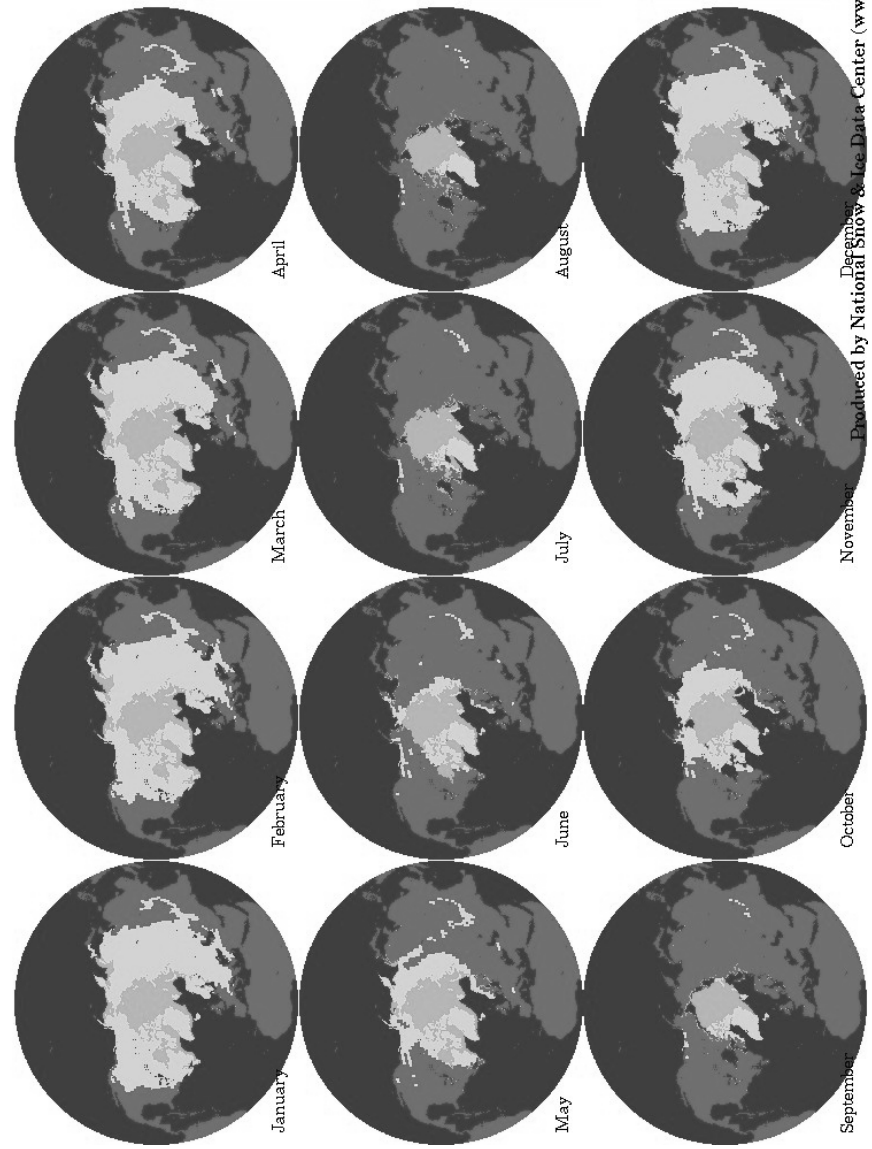
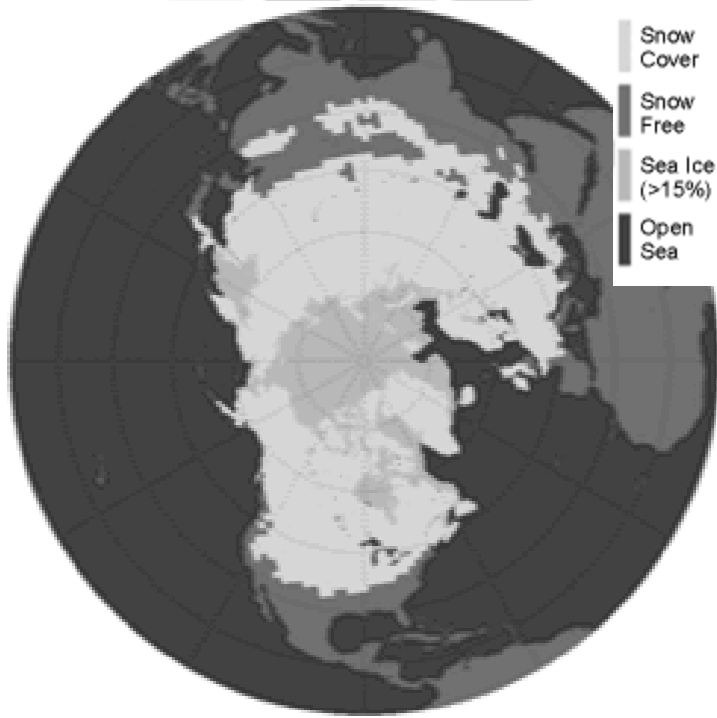
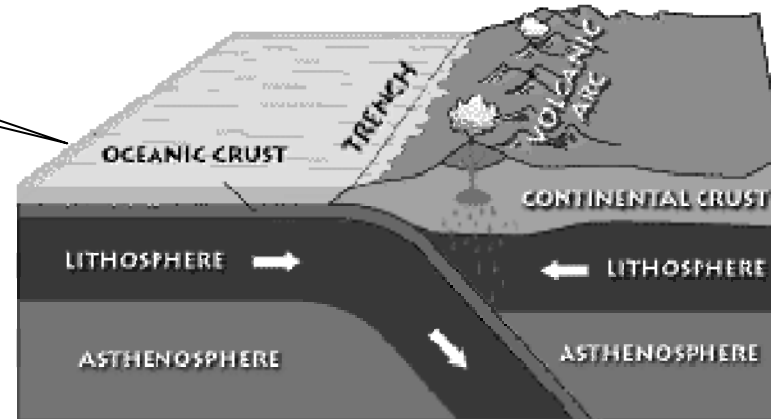
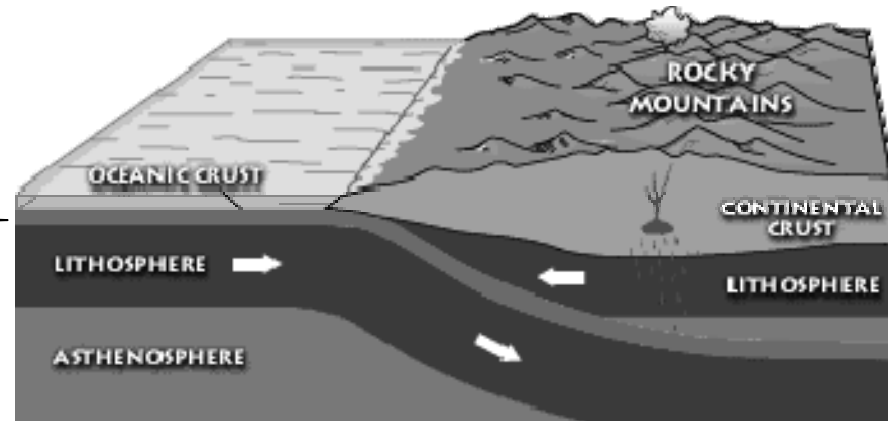
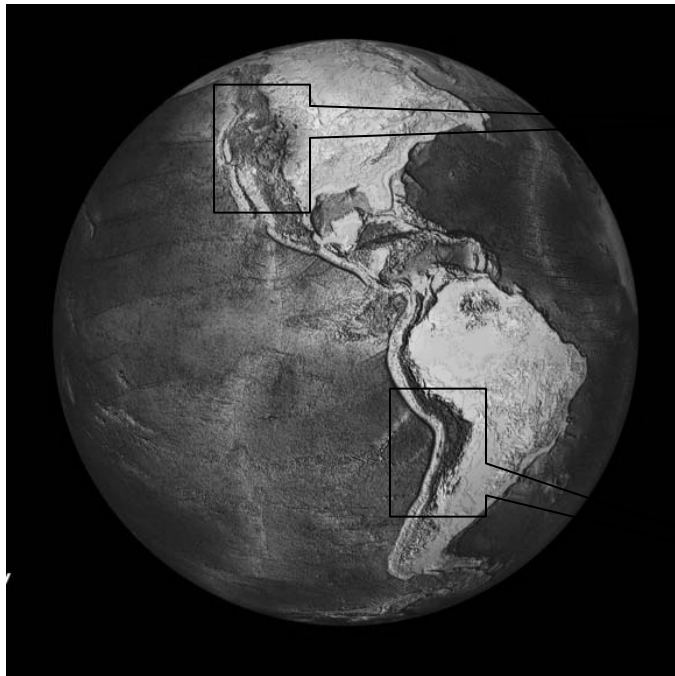


# Seasonal cycle of snow & ice cover Northern Hemisphere



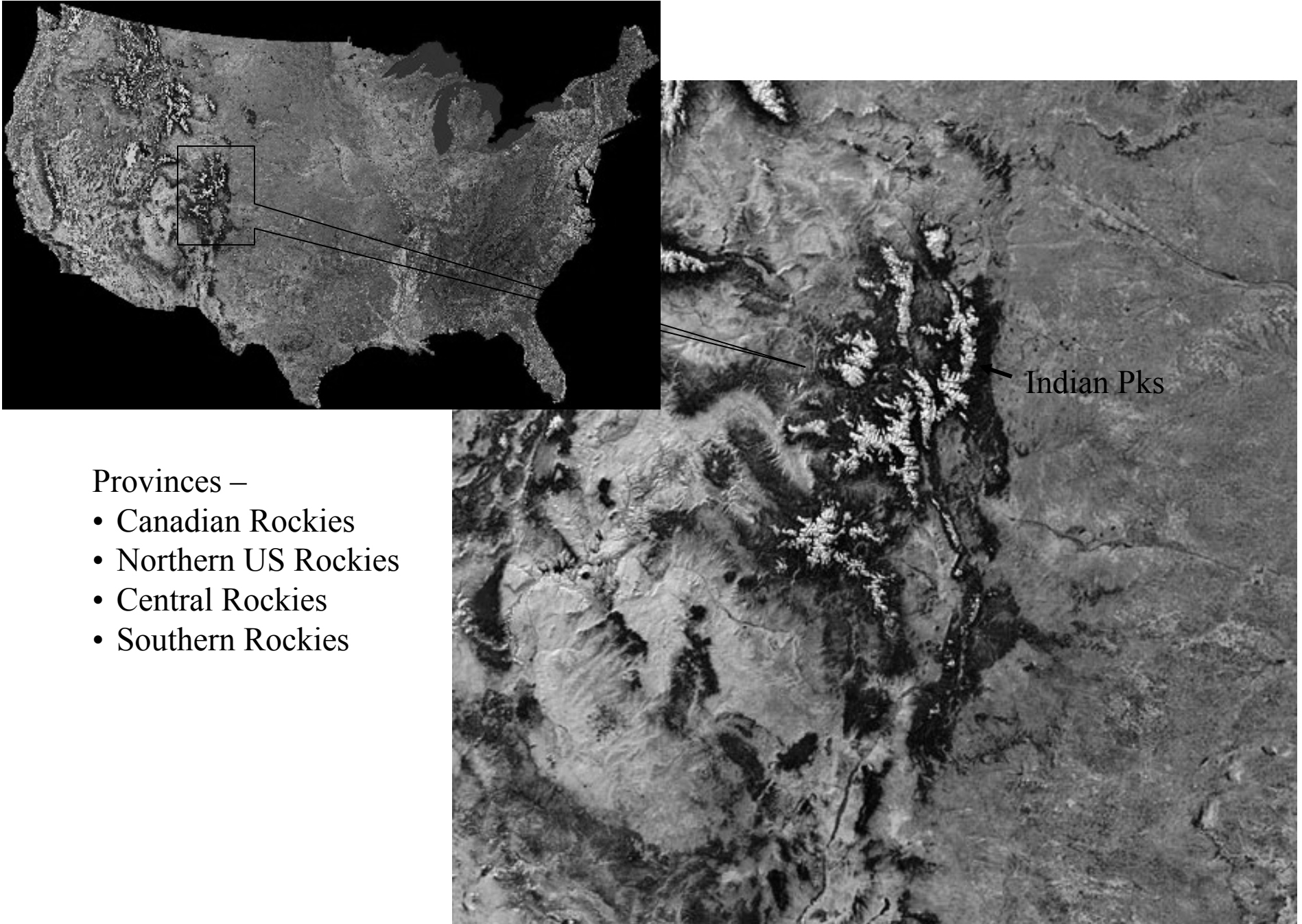
Produced by National Snow & Ice Data Center (NSIDC)

# Longitudinal extent of the Rocky Mountain region (vs. the Andes) in relation to hypothesized plate subduction geometry



Schematics from: <http://wrgis.wr.usgs.gov/docs/parks/province/rockymtn.html>  
Globe image: NGDC, NOAA

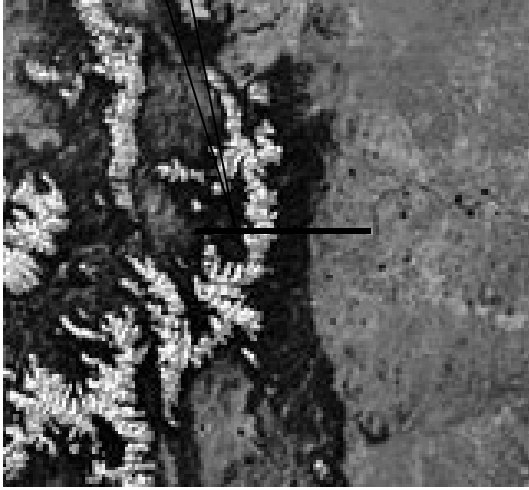
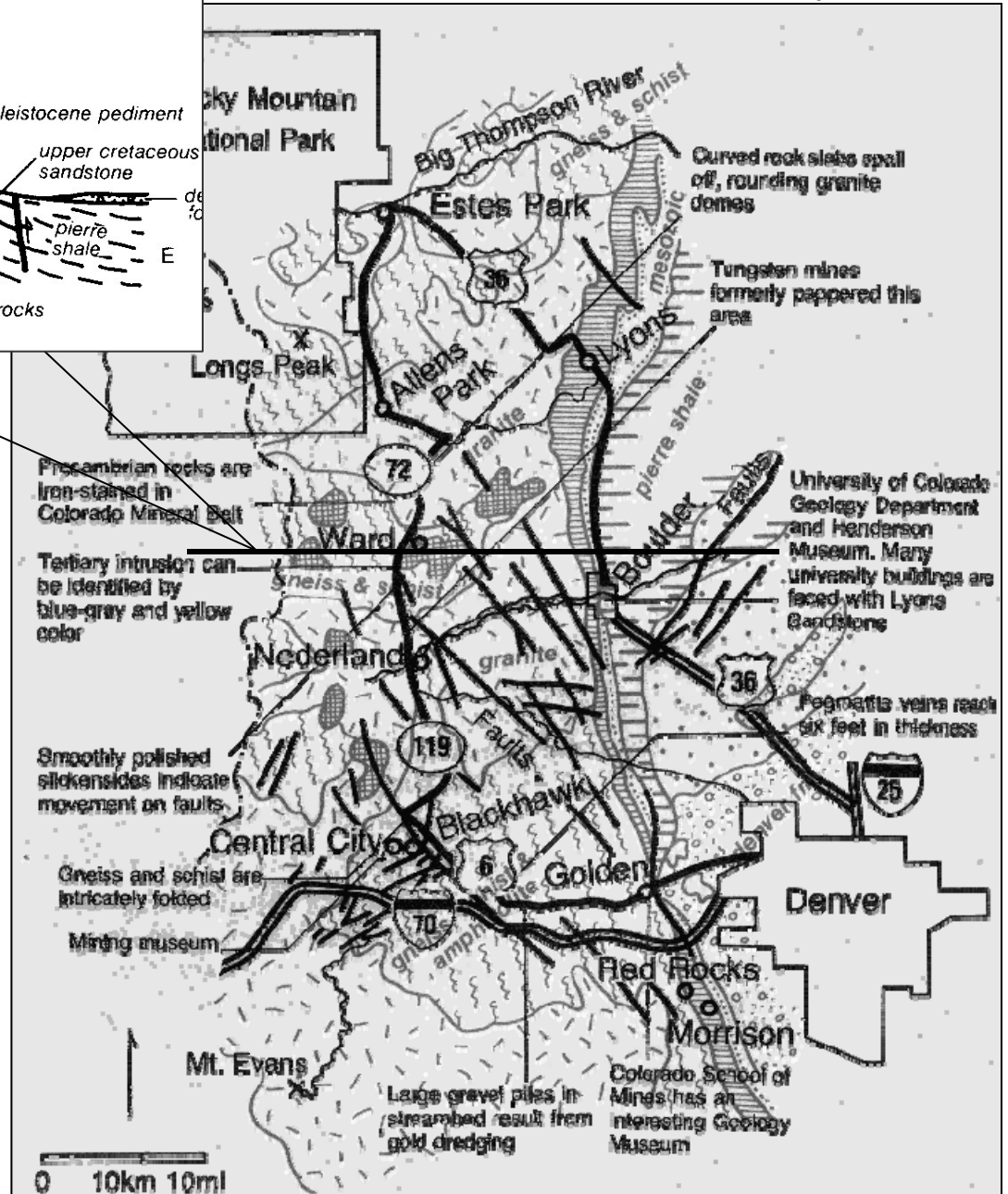
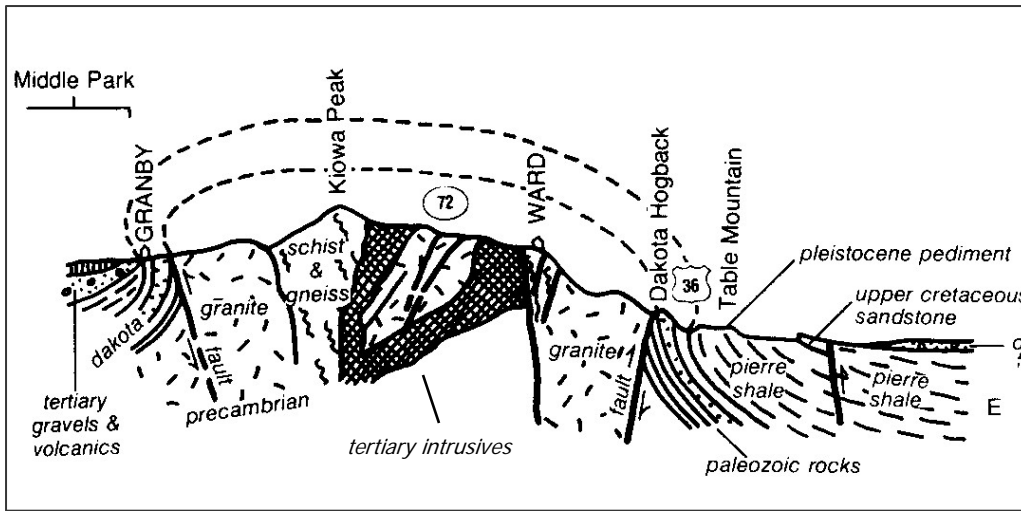
## Complex physiography of Rocky Mtn provinces



Provinces –

- Canadian Rockies
- Northern US Rockies
- Central Rockies
- Southern Rockies

# Colorado Front Range Geology Indian Peaks & vicinity

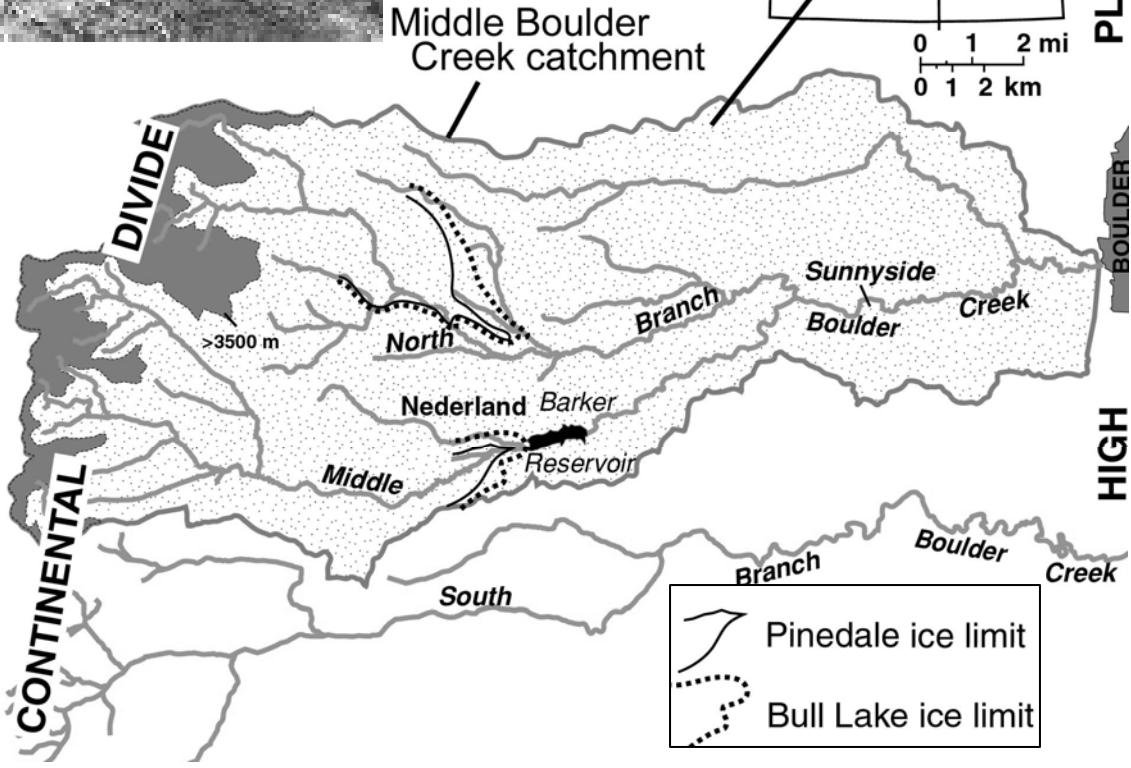


Figures from *Roadside Geology of Colorado* by Halka Chronic, 1980  
(Mountain Press Publ, Missoula)

# Indian Peaks Glaciation



Green Lakes  
Niwot Ridge



Map from T. Schildgen, 2000  
<http://www.uvm.edu/cosmolab/projects/tayweb/location.html>

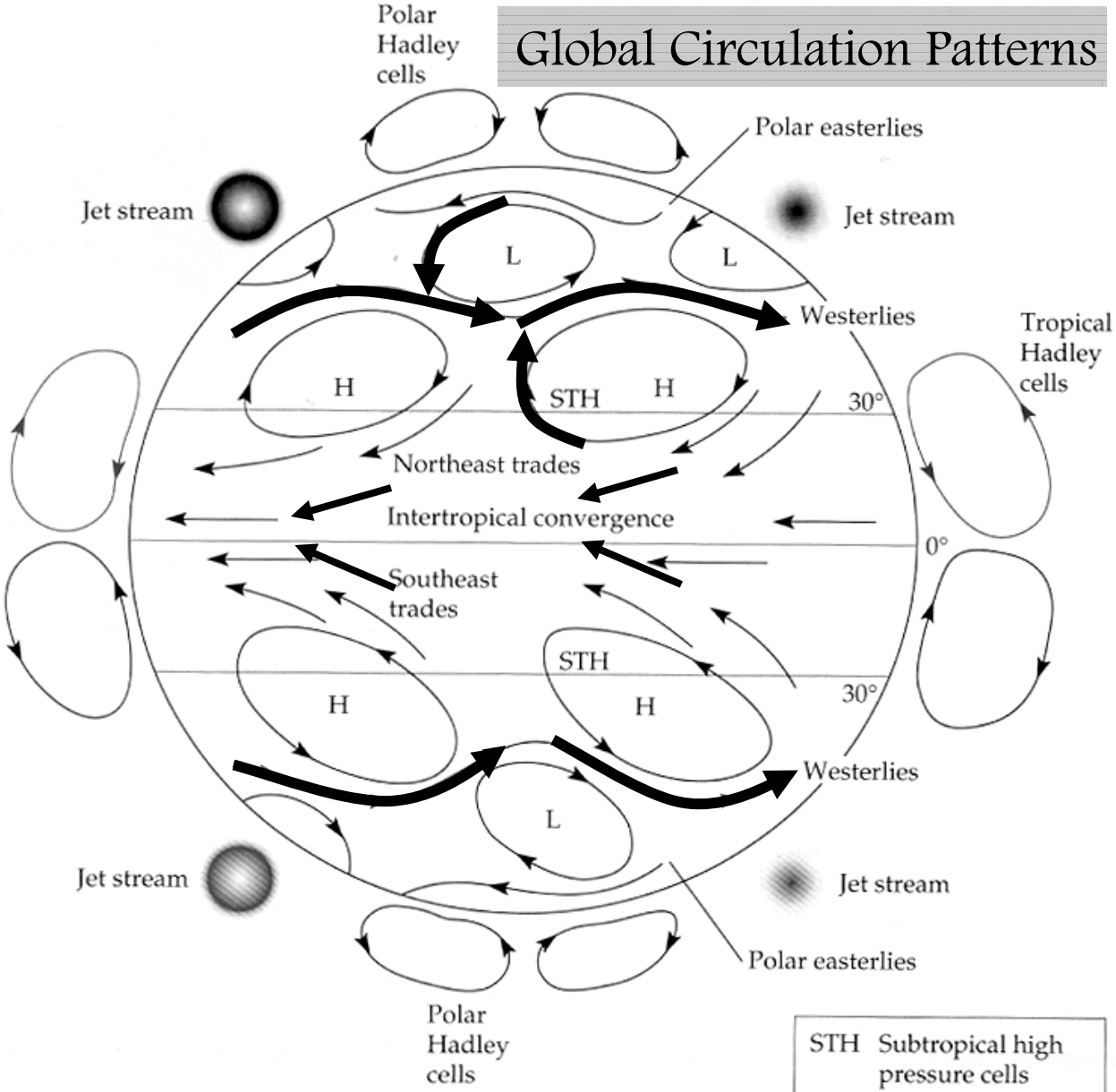
## Social setting of the Southern Rockies



Salt Lake City & vicinity

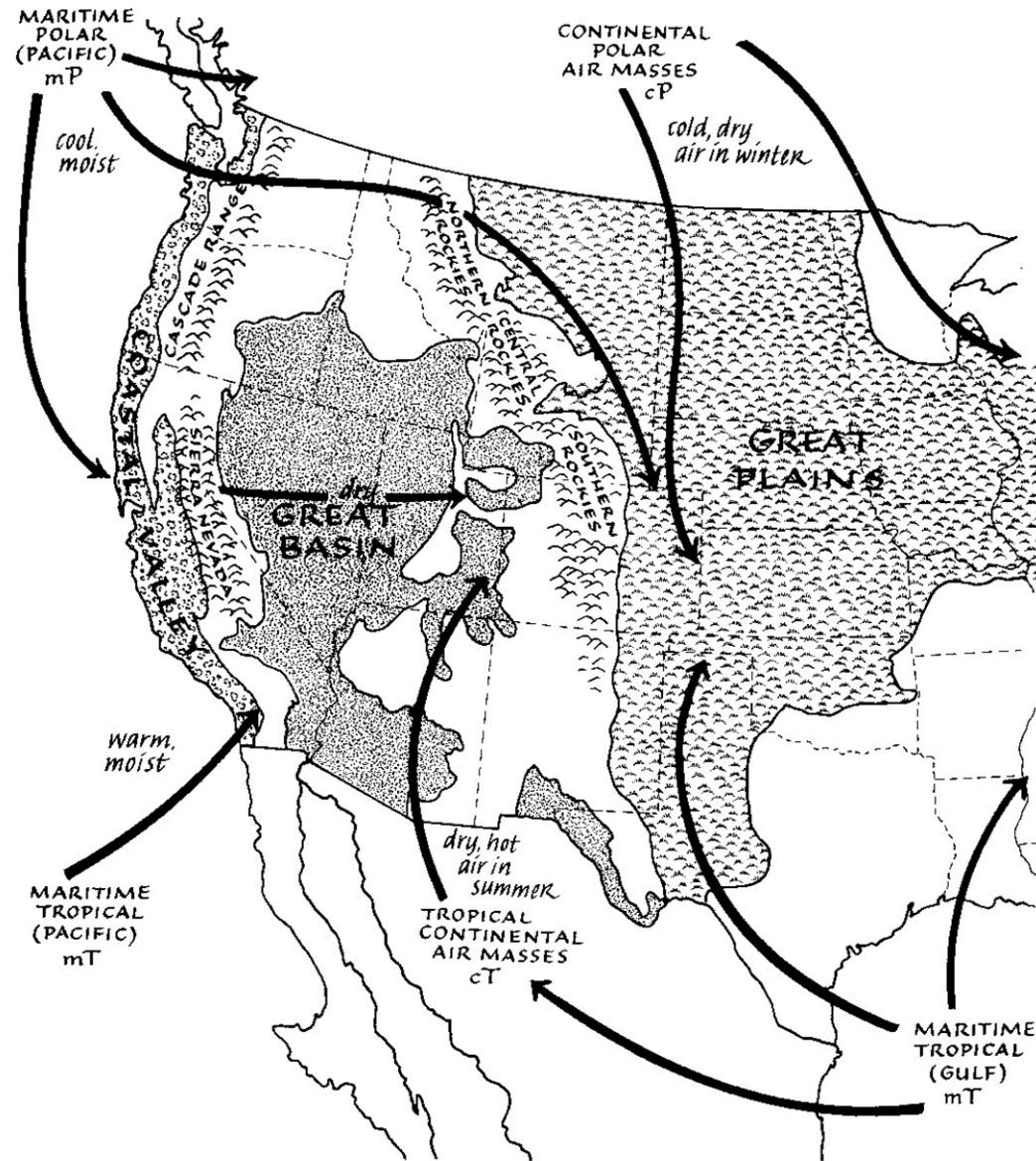
Colorado Front Range urban centers

# Global Circulation Patterns



STH	Subtropical high pressure cells
L	Low pressure cells
H	High pressure cells

# Air mass sources and flow patterns influencing the climate of the US Rocky Mtns



from A. Benedict and B. Bash. 1991. *The Southern Rockies* (Sierra Club Books)