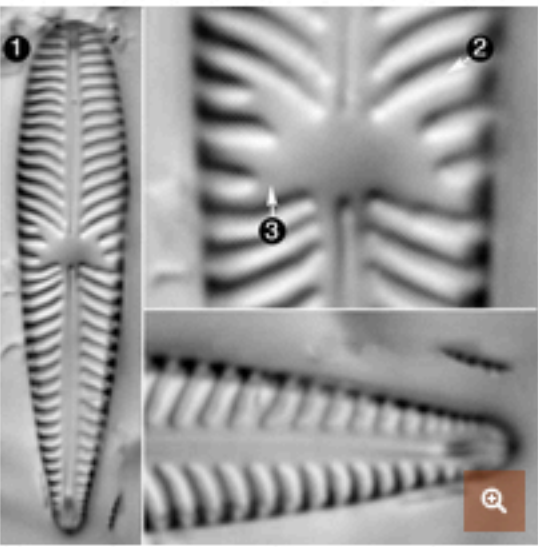


Gomphoneis olivaceum

(Hornem.) P.A.Dawson ex R.Ross and P.A.Sims 1978



Category	Asymmetric Biraphid
Length Range	14-40 µm
Width Range	5-8 µm
Striae in 10 µm	10-13 in the center of the valve, 12-14 at the ends
Contributor	Pat Kociolek - Feb 2011
Reviewer	Sam Rushforth - Jul 2011

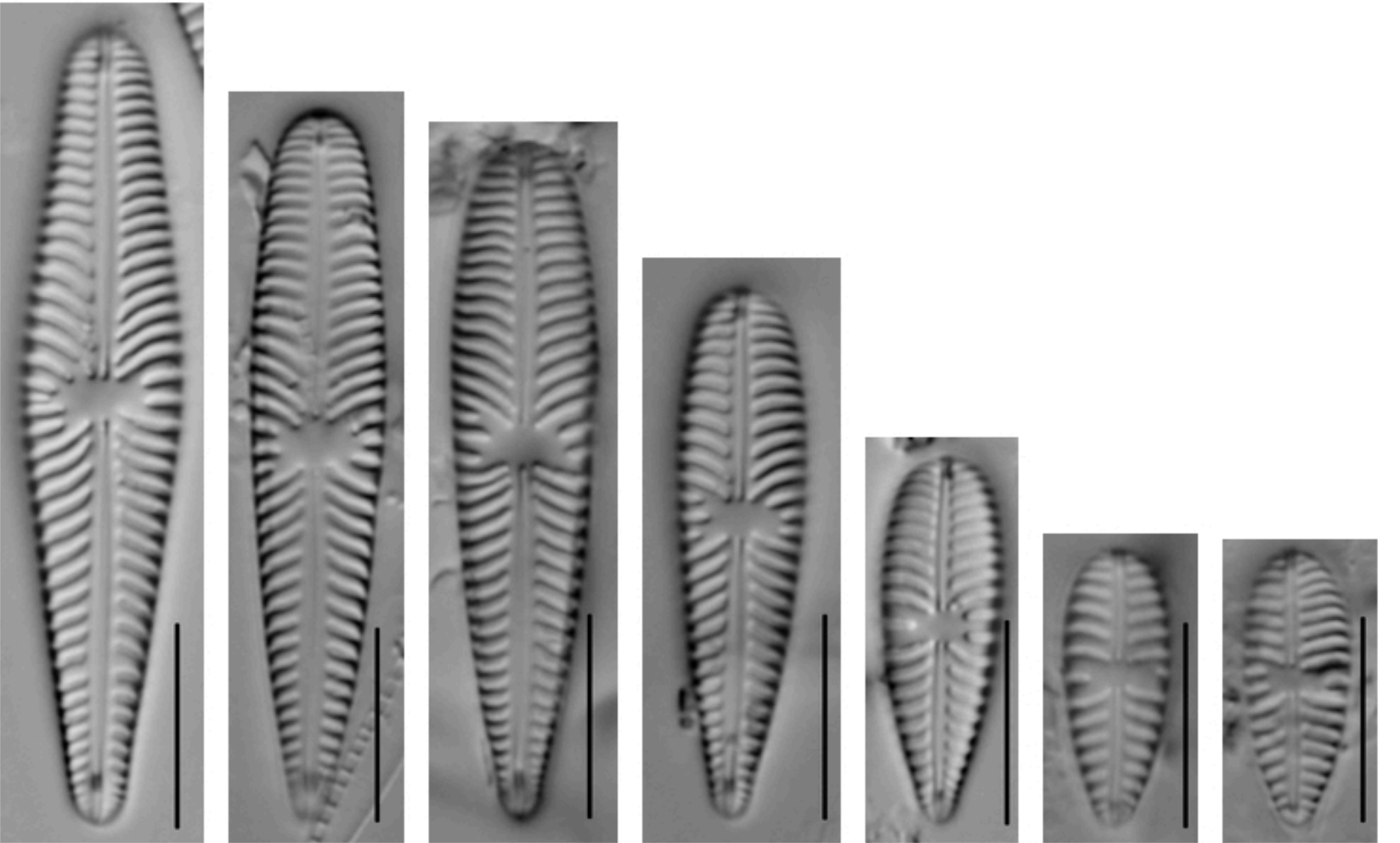
Synonyms
Gomphonema olivaceum (Hornem.) Bréb. 1838

Genus Considered
Gomphonella

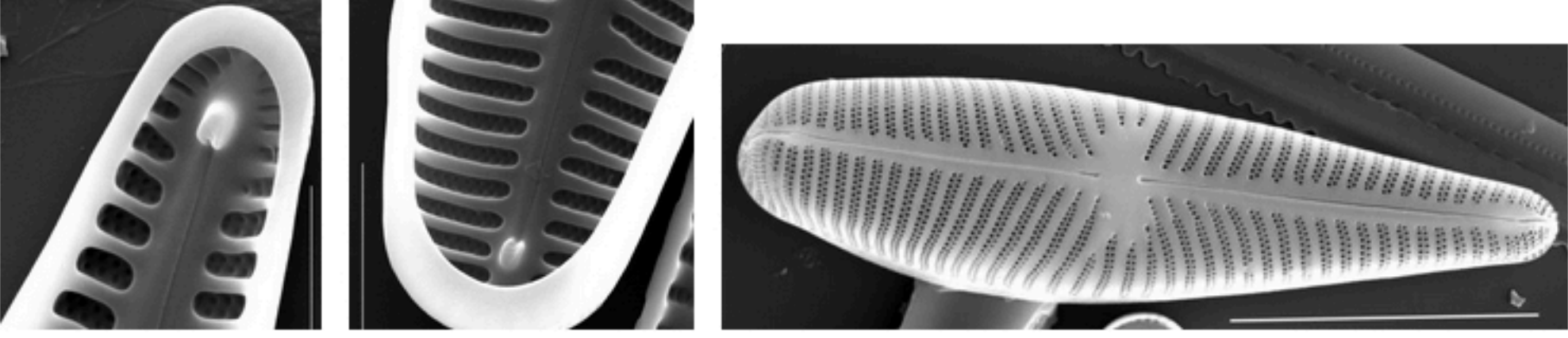
- Identification
- Autecology
- Original Description
- EMAP Assessment
- Citations & Links

Compare

Identification



View image metadata



Description

Valves are clavate with a broadly rounded headpole and a narrow footpole. The valve tapers more strongly towards the footpole than to the headpole. The raphe is filiform and lateral. The raphe terminates internally distantly from the apices. The axial area is narrow, straight, and expanded laterally to form a rectangular central area bordered by shortened striae at or near the margin. Stigma are absent. Striae are costate and individual areoale are not visible in the LM. Striae are radiate. The apical pore fields appear (with DIC optics) more like condensed striae rather than differentiated apical pore fields.

Although this species was validly transferred to *Gomphoneis* (Ross and Sims 1978) (also see Dawson 1974), this classification has not been uniformly recognized and continues to appear as *Gomphonema olivaceum*.

Note that in the North American flora we recognize a more narrow concept than that suggested by Krammer and Lange-Bertalot (1986, pl. 165). The specimens illustrated in figs. 4-6 are similar to those in North America. Figures 1-3 appear to be of another taxon.

Autecology

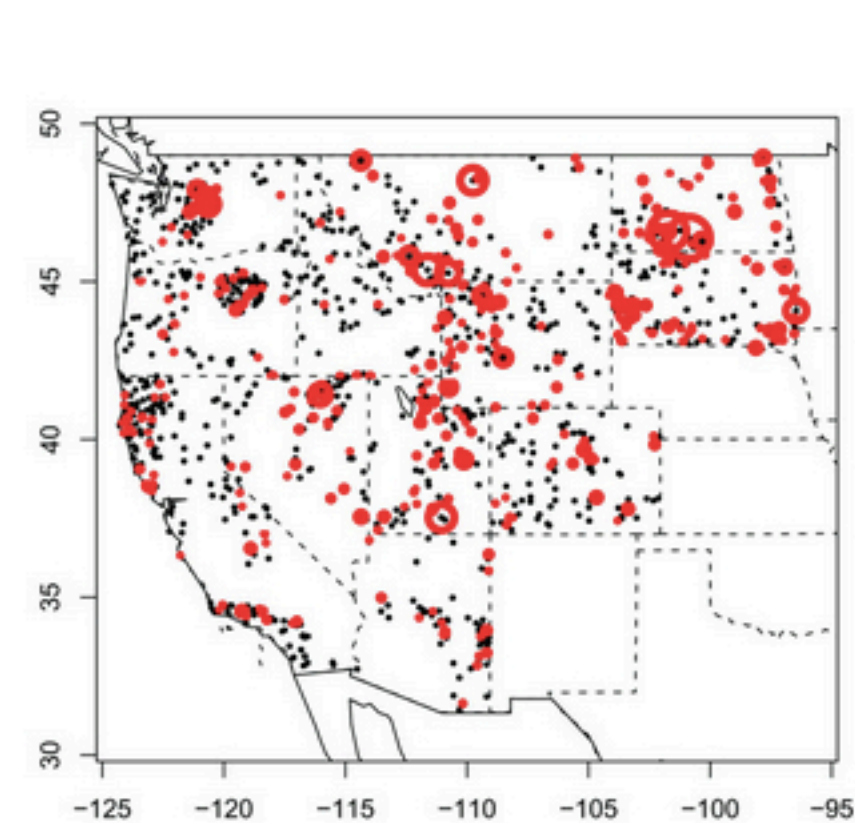
Size Range, µm3	101-1000
Motility	Moderately motile
Attachment	Vertical
Habitat	Benthic
BCG	BCG 3
Distribution	Western EMAP, California, Northeast Lake Sediments
Learn more about this >	

Original Description

Basionym	Ulva olivacea
Author	Hornem. 1806

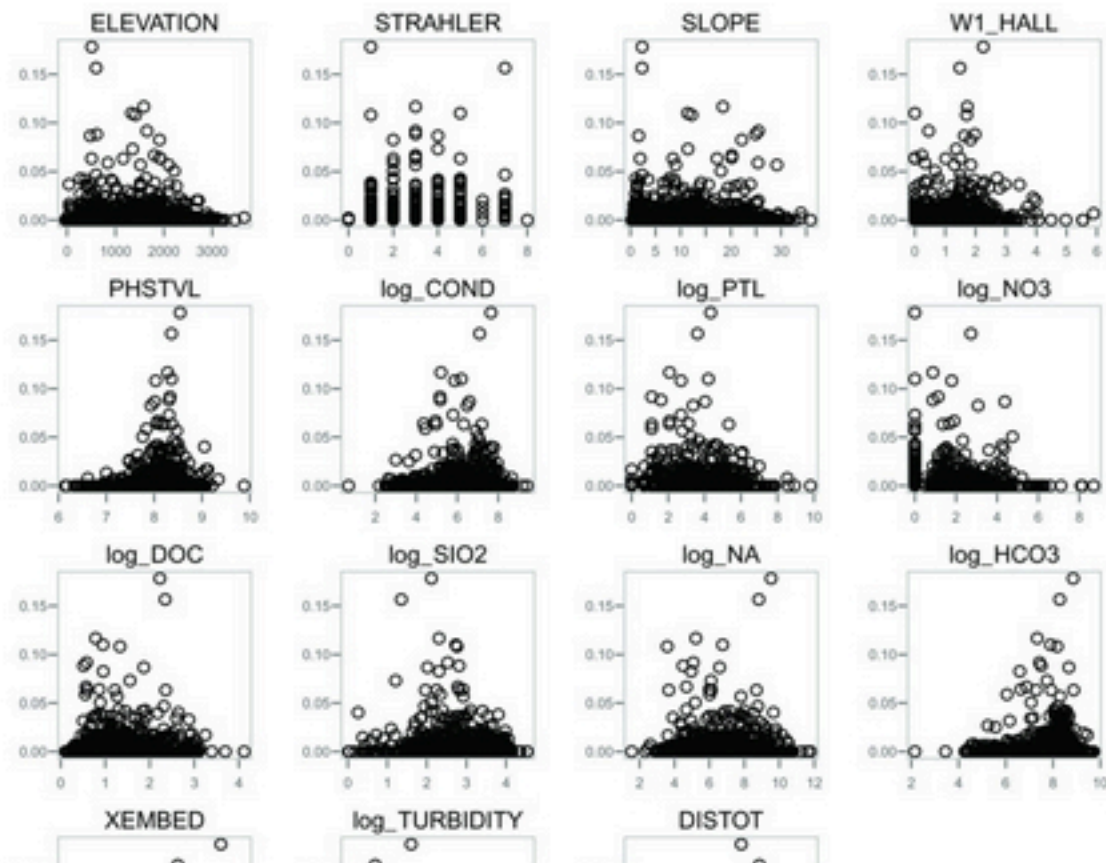
EMAP Assessment

EMAP Distribution



Response Plots

Response Plot Key >



Citations & Links

Citations

Dawson, P.A. (1974) Observations on diatom species transferred from *Gomphonema* C.A. Agardh to *Gomphoneis* Cleve *British Phycological Journal* 9: 75-82.

Jahn, R., Kusber, W-F., Skibbe, O., Zimmermann, J., Van, A.T., Buczkó, K. and Abarca, N. (2019) *Gomphonella olivacea* (Bacillariophyceae) – a new phylogenetic position for a well-known taxon, its typification, new species and combinations *Plant Ecology and Evolution* 152 (2): 219–247.

Publication Link: [10.5091/plecevo.2019.1603](https://doi.org/10.5091/plecevo.2019.1603)

Krammer, K. and Lange-Bertalot, H. (1986) *Bacillariophyceae*. 1. Teil: Naviculaceae In: Ettl, H., J. Gerloff, H. Heynig and D. Mollenhauer (eds.) *Süßwasserflora von Mitteleuropa*, Band 2/1. Gustav Fisher Verlag, Jena. 876 pp

Patrick, R.M. and Reimer, C.W. (1975) The Diatoms of the United States, exclusive of Alaska and Hawaii, V. 2 *Monographs of the Academy of Natural Sciences of Philadelphia* 13

Ross, R. and Sims, P.A. (1978) Notes on some diatoms from the Isle of Mull, and other Scottish localities *Bacillaria* 1:151-168

Links

Index Nominum Algarum

Transfer

CAS

Link

North American Diatom Ecological Database
NADED ID: 37065

Cite This Page

Kociolek, P. (2011). *Gomphoneis olivaceum*. In *Diatoms of North America*. Retrieved July 15, 2019, from https://diatoms.org/species/gomphoneis_olivaceum