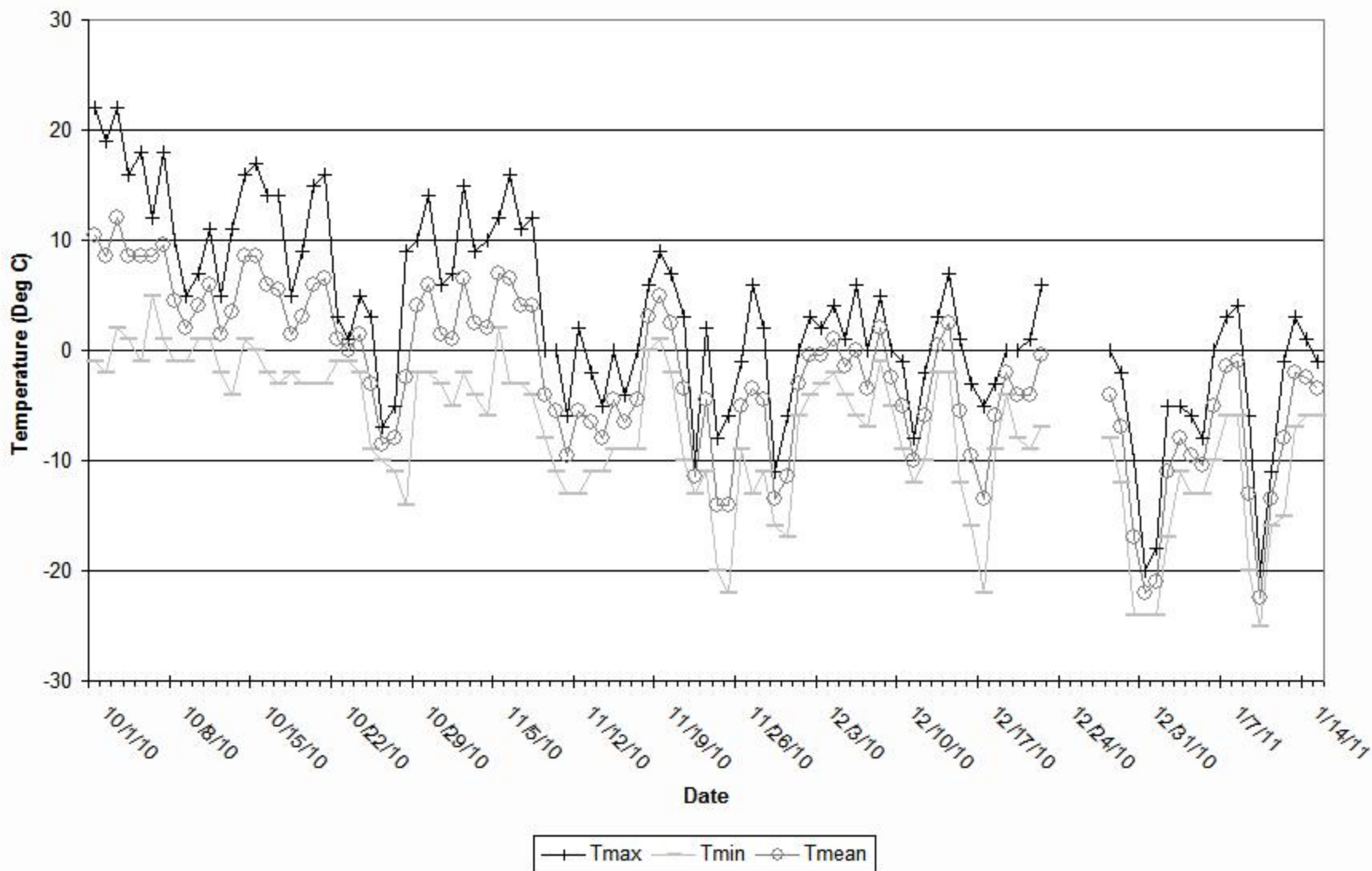
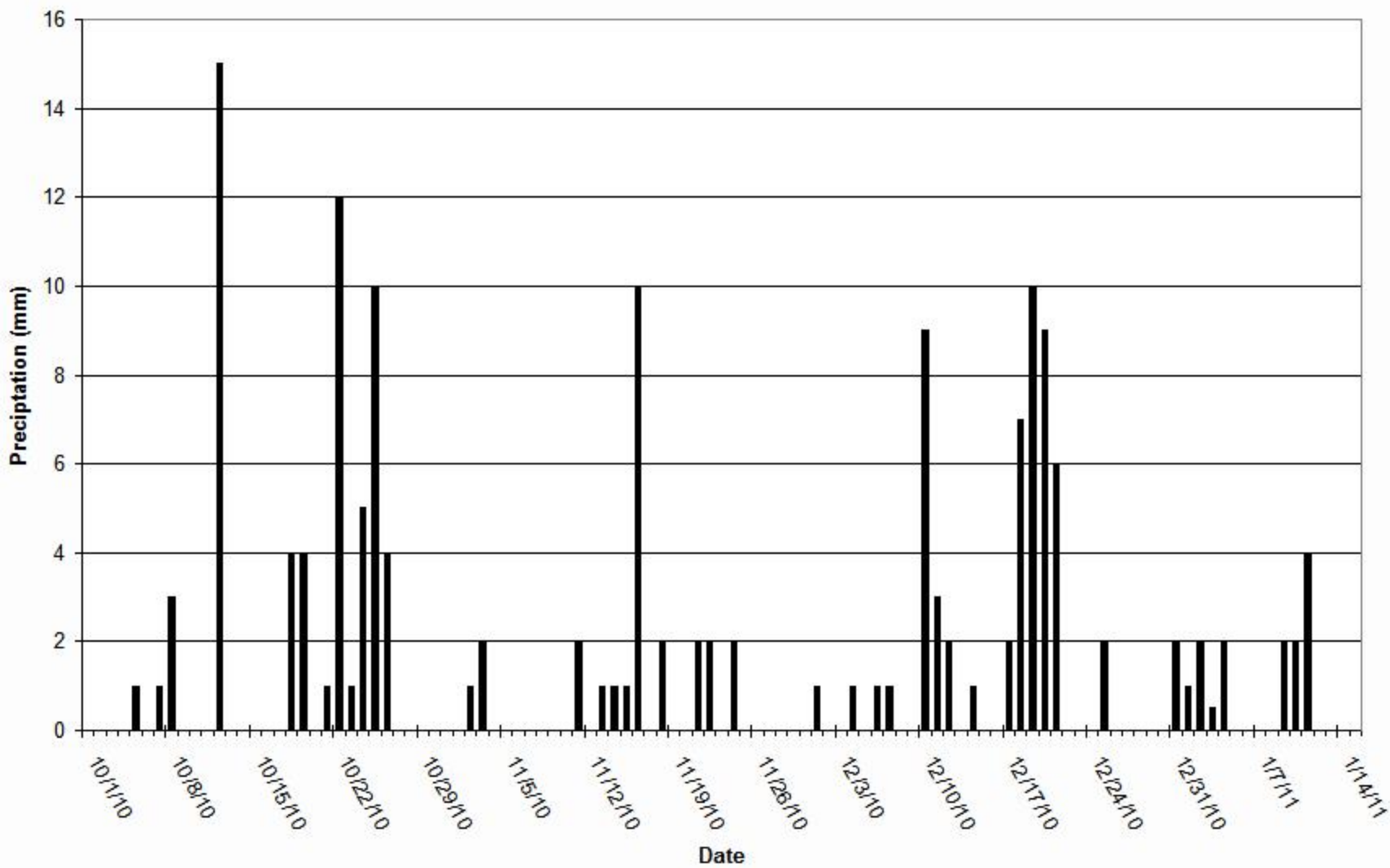


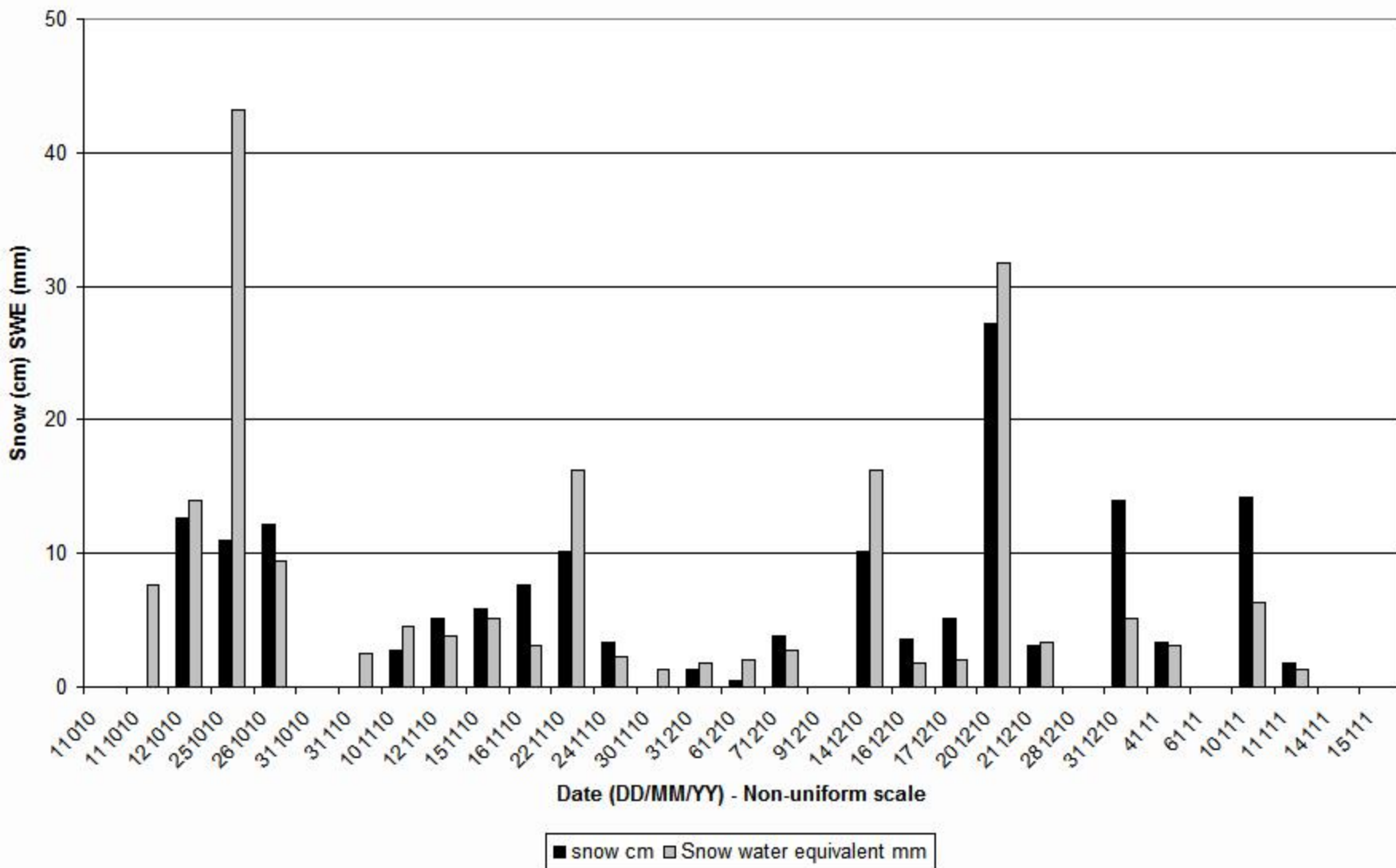
C1 Temperature (Chart Data)



C1 precipitation (Chart Data)



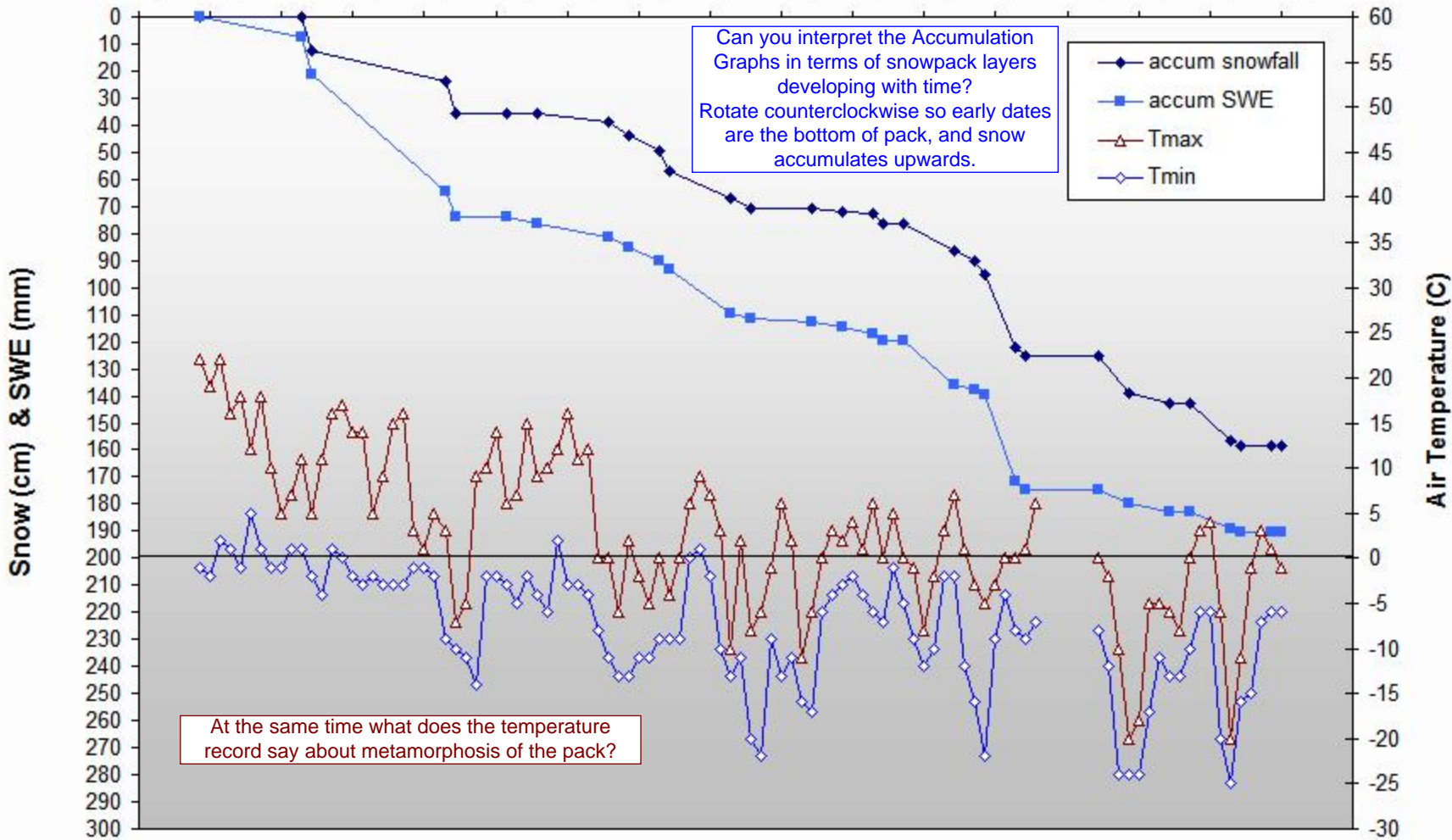
C1 New Snowfall and Snow Water Equivalent



C1 Accumulated Snowfall and Snow Water Equivalent / Air Temperature

Date (MM/DD/YY)

9/25/10 10/2/10 10/9/10 10/16/10 10/23/10 10/30/10 11/6/10 11/13/10 11/20/10 11/27/10 12/4/10 12/11/10 12/18/10 12/25/10 1/1/11 1/8/11 1/15/11 1/22/11



Can you interpret the Accumulation Graphs in terms of snowpack layers developing with time? Rotate counterclockwise so early dates are the bottom of pack, and snow accumulates upwards.

At the same time what does the temperature record say about metamorphism of the pack?

C1 Accumulated Snowfall and Snow Water Equivalent / Air Temperature

Date (MM/DD/YY)

